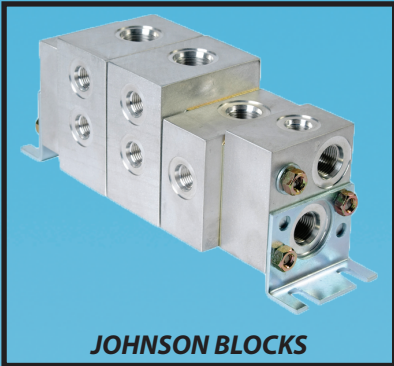


DATUM-A-INDUSTRIES, INC.

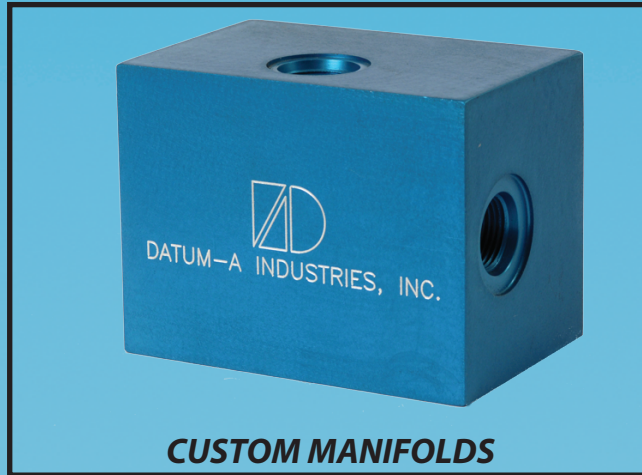
SINCE 1981



JOHNSON BLOCKS



HEADER MANIFOLDS



CUSTOM MANIFOLDS

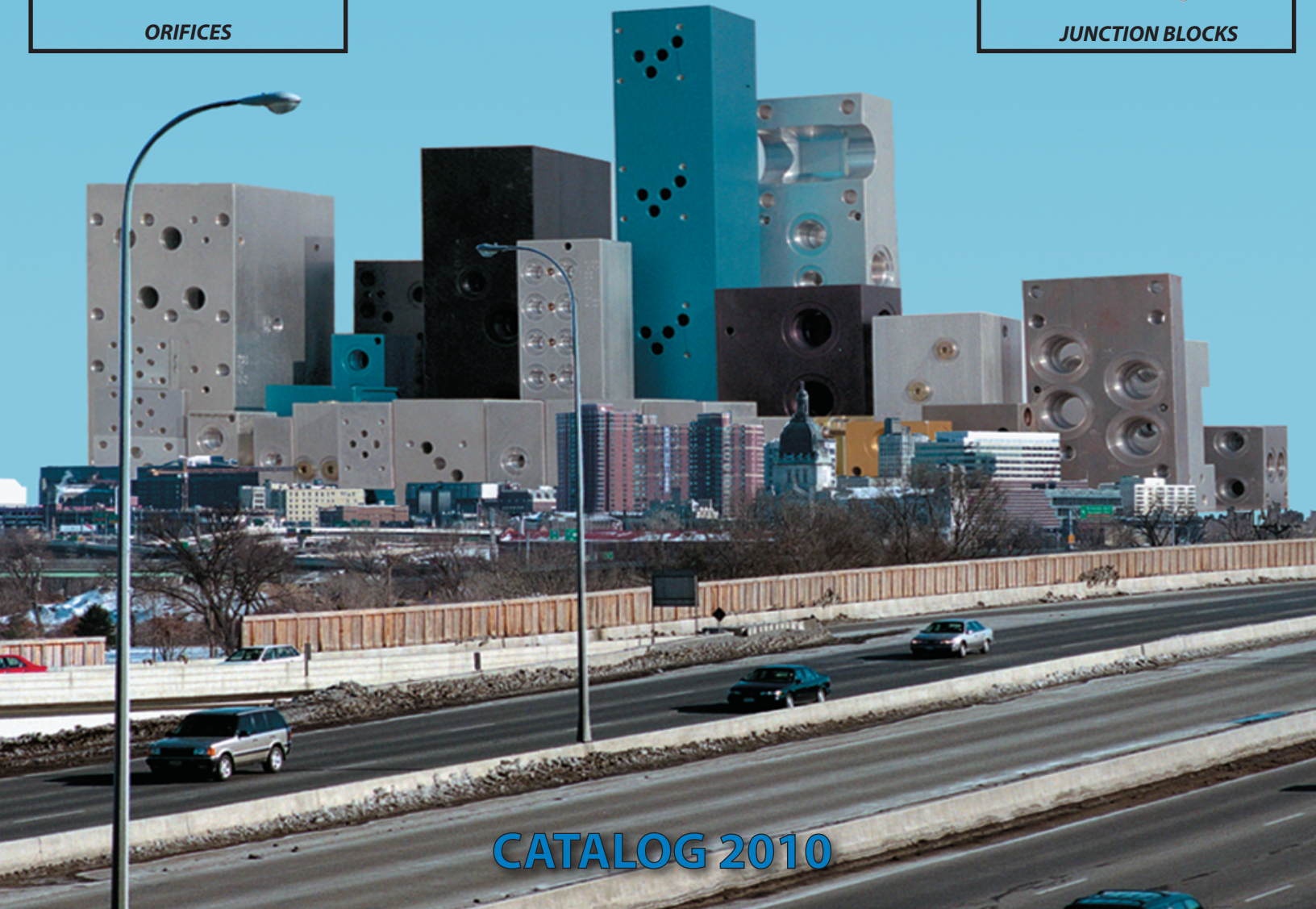
ORDER ONLINE AT WWW.DATUM-MANIFOLDS.COM



ORIFICES



JUNCTION BLOCKS



CATALOG 2010



Datum-A-Industries, Inc.

Since 1981

Catalog 2010

“At Datum-A-Industries the term ‘hands on’ is more than just a phrase. From the time our customers send in a quote request to the delivery of the final product every step is given the personal attention to detail that is expected of an industry leader. Our commitment to excellence stands as a benchmark throughout our entire organization. It is our goal to combine the finest materials and precision craftsmanship to provide a superior product at a competitive price.”



Brian Johnson
President

TO PLACE AN ORDER:

ONLINE: WWW.DATUM-MANIFOLDS.COM

PHONE: (763) 479-1133

TOLL FREE: (800) 806-6162

FAX: (763) 479-3667

EMAIL: INFO@DATUM-MANIFOLDS.COM

DISTIBUTORS NATIONWIDE: CALL FOR YOUR LOCAL DISTRIBUTOR

RFQ'S: EMAIL OR FAX - USUALLY PROCESSED IN 24 HOURS OR LESS

BUSINESS HOURS: 8 AM TO 4 PM CENTRAL TIME

ORDER BY 2 PM CENTRAL TIME FOR SAME DAY SHIPPING ON IN-STOCK ITEMS

VISA, MASTERCARD, DISCOVER AND AMERICAN EXPRESS ACCEPTED

DATUM-A IS NOT RESPONSIBLE FOR ANY CLERICAL, TYPOGRAPHIC OR PRINTING ERRORS IN THIS CATALOG.



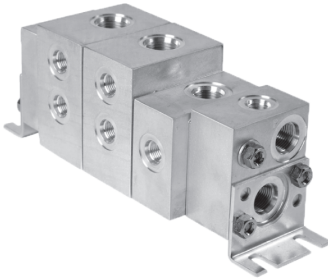


TABLE OF CONTENTS



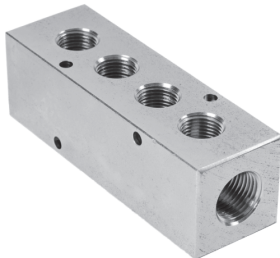
CUSTOM MANIFOLDS

4



JOHNSON BLOCKS

6



**HEADER MANIFOLDS
JUNCTION BLOCKS**

37



**ORIFICE DISCS,
PLATES AND PLUGS**

55



Datum-A-Industries, Inc.



Since 1981



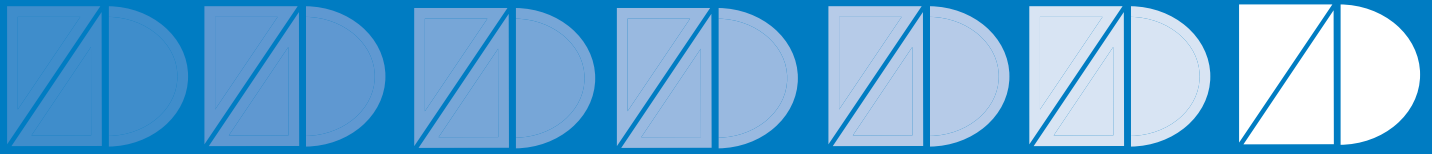
Catalog 2010



CUSTOM MANIFOLDS



SINCE 1981, DATUM-A-INDUSTRIES HAS BEEN A LEADER IN THE DESIGN AND MANUFACTURING OF CUSTOM MANIFOLDS. CUSTOMERS CONTINUE TO DO BUSINESS WITH US BECAUSE OF OUR SUPERIOR QUALITY, FAST TURNAROUND TIMES, LOW COST AND GREAT CUSTOMER SERVICE.



Datum-A-Industries, Inc.

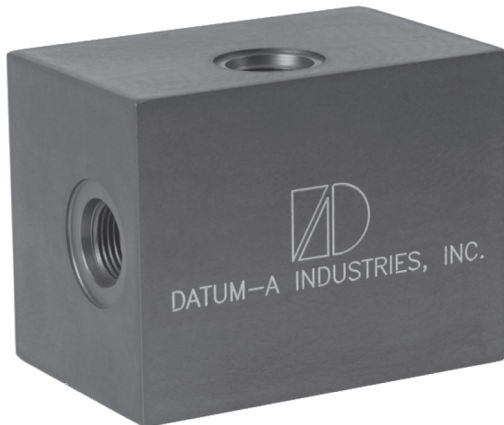
Since 1981

Catalog 2010

ENGINEERING SERVICES

- WE DESIGN FROM YOUR
- SCHEMATIC & PARTS LIST
- SKETCHES
- SAMPLE PARTS

SEND US YOUR DRAWINGS/FILES
TO INFO@DATUM-MANIFOLDS.COM
FOR QUOTE



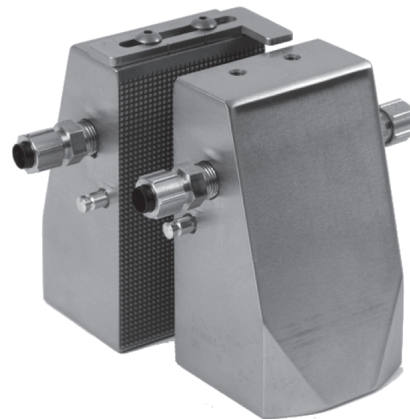
TOOLING ON HAND FOR

- SUN
- HYDRAFORCE
- EATON/VICKERS
- DANFOSS/FLUID CONTROLS
- PARKER
- WATERMAN
- COMPACT CONTROLS
- COMMAND CONTROLS
- STERLING
- ETC, ETC...



CAPABILITIES

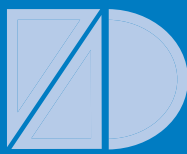
- ALL MATERIALS
- PIPE THREADS TO 3" NPT
- SAE O-RING PORTS -2 TO -32
- METRIC AND BRITISH PORTS
- PARTS 1000 LBS PLUS
- PARTS 6FT LONG PLUS



FAST QUOTATIONS
COMPETITIVE PRICING

SHORT LEADTIMES
ONE PIECE TO THOUSANDS

QUALITY
ONE PIECE TO THOUSANDS



Datum-A-Industries, Inc.

Since 1981

Catalog 2010

JOHNSON BLOCK

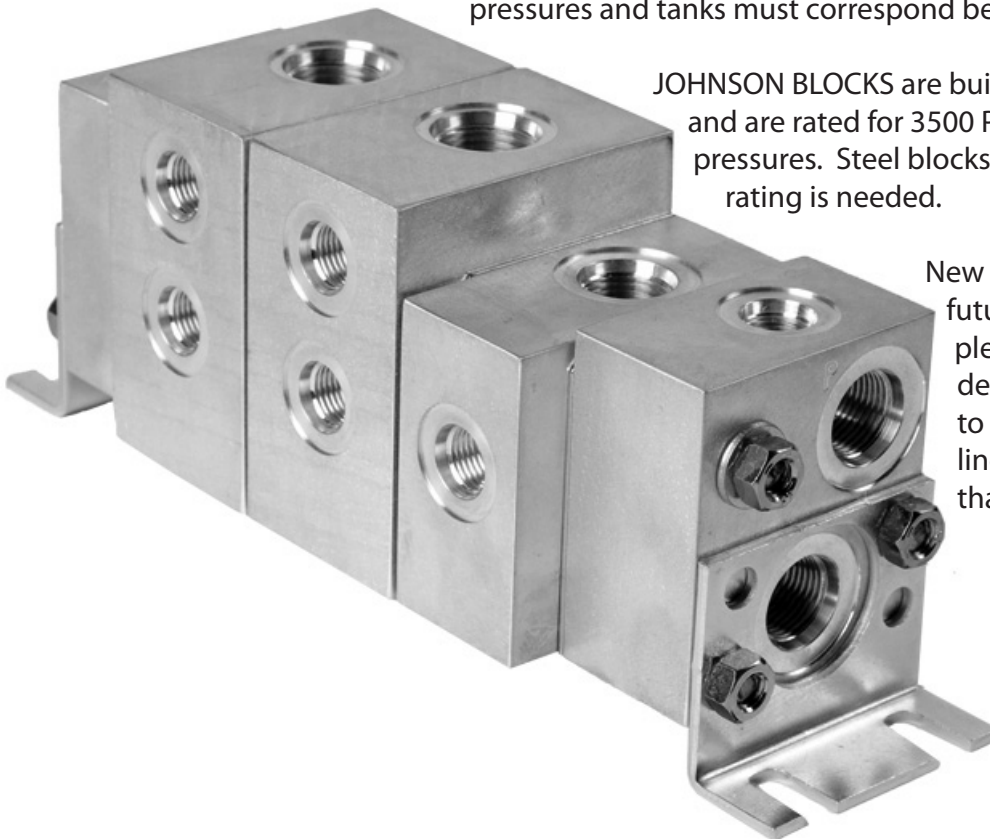
MANIFOLD SYSTEM™

If you're looking for a way to get custom manifolds without paying custom prices, JOHNSON BLOCKS may provide your solution. Utilizing a series of standard blocks pieced together for your specific needs, JOHNSON BLOCKS can be used to create inexpensive, customized manifolds.

Modular, bankable, stackable manifolds or valve packages are a proven technology used by many, if not most, major manufactures for the last 40 plus years. JOHNSON BLOCKS can be used for mobile and industrial applications. With modern manufacturing techniques and equipment, these modular pieces guarantee high quality and consistent dependability.

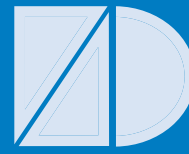
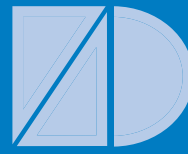
At Datum-A-Industries, home of the JOHNSON BLOCK, blank modules are kept in stock for fast conversion into specials, cutting the leadtime to days for many custom blocks.

When building a circuit with JOHNSON BLOCKS, great care must be taken in selecting a block to use with a particular valve, since flow paths vary from one manufacturer to another and one valve model to another. We can help you compare the section view of the JOHNSON BLOCK with the catalog page of the specific valve to be used. The ins and outs and pressures and tanks must correspond between the valve and the block.



JOHNSON BLOCKS are built from 6061-T6 aluminum and are rated for 3500 PSI operating pressures. Steel blocks can be made if higher PSI rating is needed.

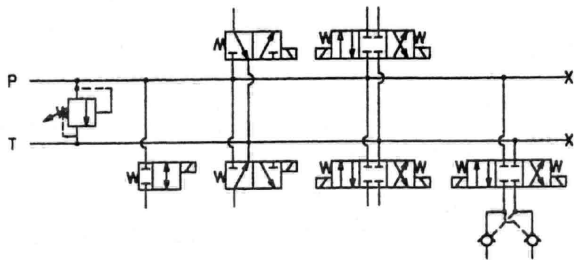
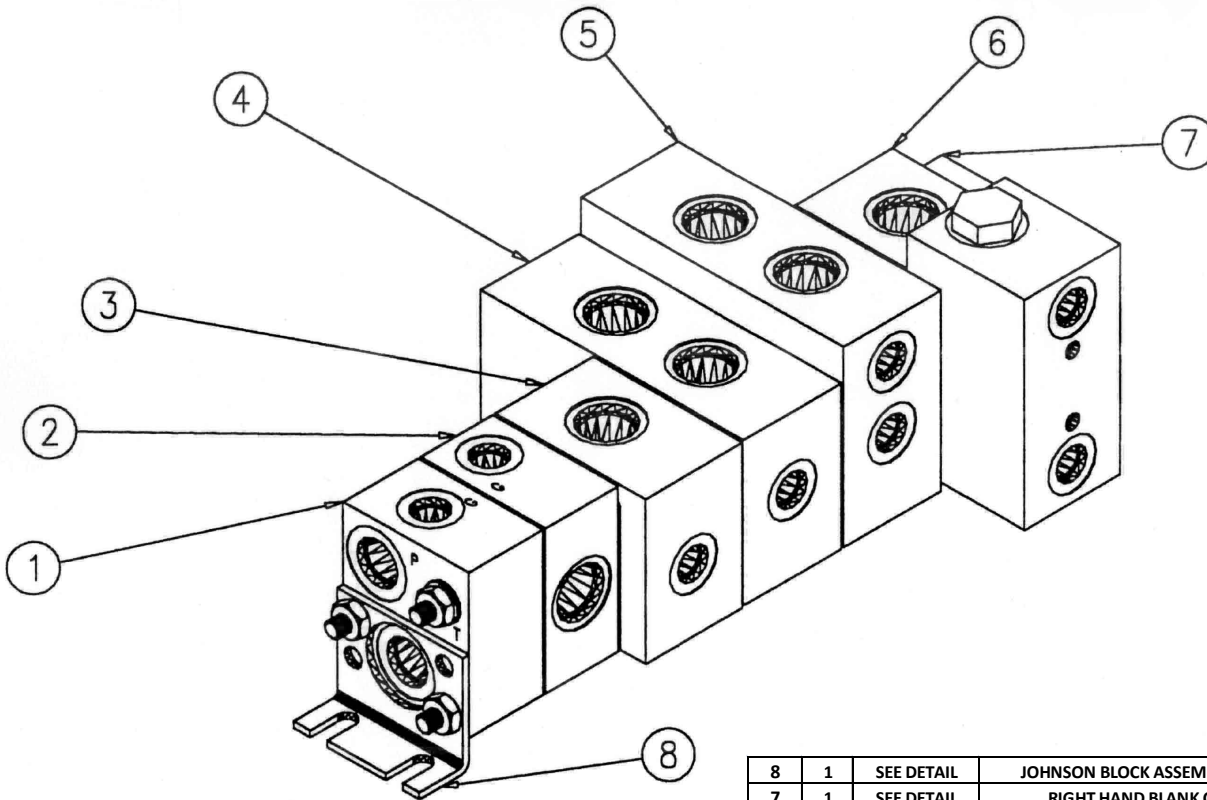
New blocks will be added in the future. If you have a special need, please contact our engineering department, since we may be able to add a block to our product line that will meet your specific needs.



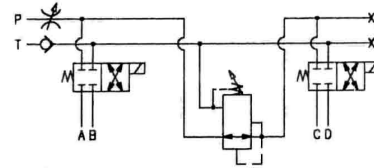
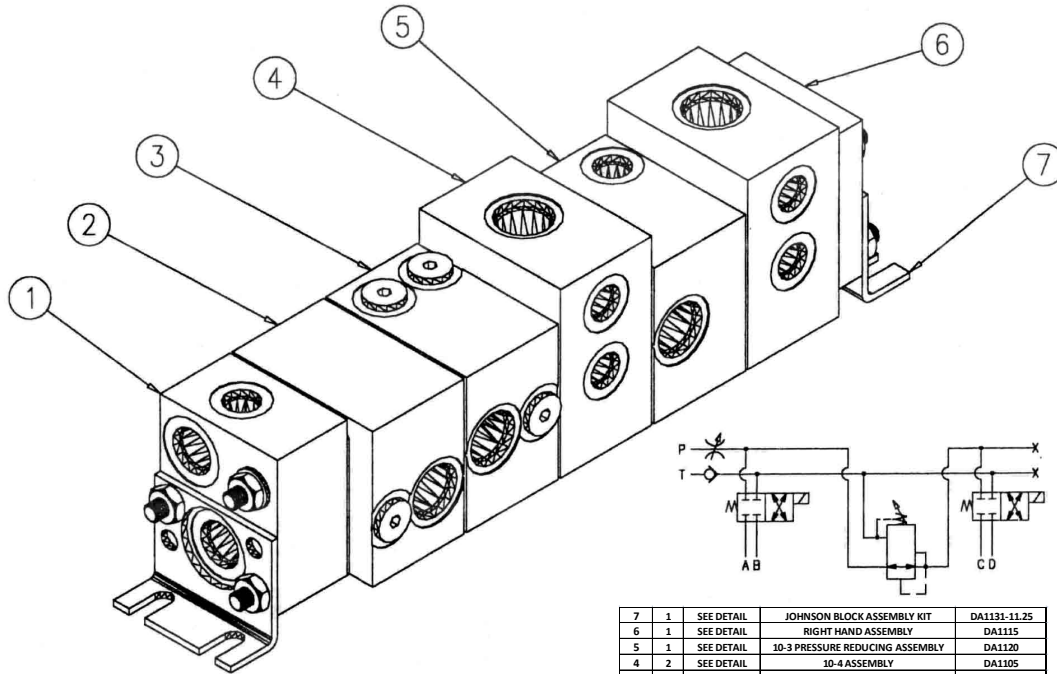
<u>JOHNSON BLOCK CONTENTS</u>	<u>PAGE</u>
TYPICAL CIRCUITS / ASSEMBLIES	8-9
COMMON CAVITY INTERCHANGE	10
BOLT-ON VALVE INTERCHANGE (ISO 03, ISO 05)	11
RH & LH P & T END CAPS	12
MID INLET P & T	13
MID SUPPORT / COUPLER	13
RH & LH BLANK END CAPS	14
SPACER BLOCKS	15
BLOCKING / ORIFICE BLOCK	16
08-2 & 10-2 COMMON CAVITY (2 WAY VALVES)	17
08-3 & 10-3 COMMON CAVITY (3 WAY VALVES)	18
08-3 & 10-3 HORIZONTAL COMMON CAVITY (3 WAY VALVES)	19
08-4 & 10-4 COMMON CAVITY (4 WAY VALVES)	20
08-4 & 10-4 COMMON CAVITY (W/LOAD HOLDING)	21
08-4 & 10-4 COMMON CAVITY (W/DUAL LOAD HOLDING)	22
10-4 COMMON CAVITY (W/DUAL C.O. RELIEF)	23
DUPLEX 08-2 & 10-2 COMMON CAVITY (2 WAY VALVES)	24
DUPLEX 08-3 & 10-3 COMMON CAVITY (3 WAY VALVES)	25
DUPLEX 08-4 & 10-4 COMMON CAVITY (4 WAY VALVES)	26
ISO 03 MOUNTING (FOR PARALLEL & SERIES CIRCUIT)	27
ISO 05 MOUNTING (FOR PARALLEL & SERIES CIRCUIT)	28
10-2 COMMON CAVITY (PRESSURE TO TANK DUMP VALVES, RELIEF VALVES, ETC.)	29
T-10A SUN CAVITY (PRESSURE TO TANK RELIEF VALVES, ETC.)	29
10-2 COMMON CAVITY (PRESSURE TO PRESSURE SHUT OFF, FLOW CONTROL, REGULATOR, NEEDLE VALVE)	30
10-3 COMMON CAVITY (PRESSURE REDUCING, SEQUENCE, ETC.)	30
10-2 COMMON CAVITY (TANK TO TANK CHECK VALVE, ETC.)	31
INLINE 10-4 COMMON CAVITY	32
INLINE ISO 03 MOUNTING	32
ASSEMBLY KIT	33
HARDWARE	34
SEAL PLATE, O-RING	35
ASSEMBLY ORDER WORK SHEET	36



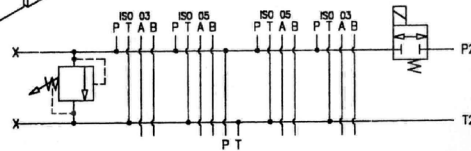
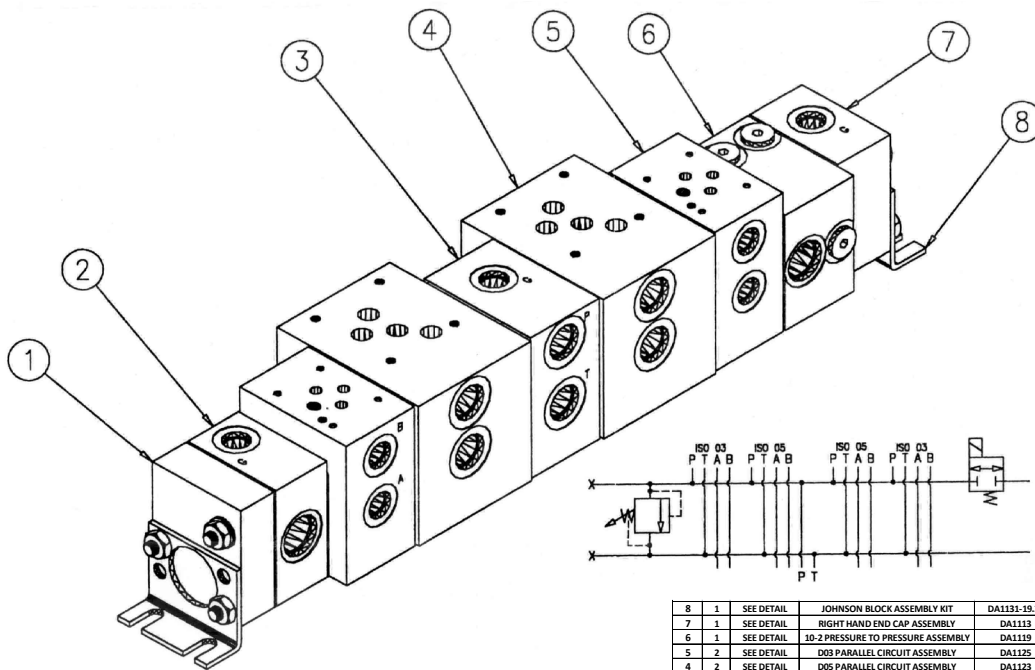
Typical Circuits/Assemblies



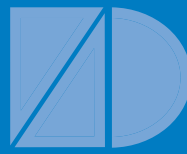
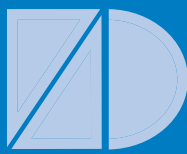
8	1	SEE DETAIL	JOHNSON BLOCK ASSEMBLY KIT	DA1131-13.00
7	1	SEE DETAIL	RIGHT HAND BLANK CAP	DA1115
6	1	SEE DETAIL	10-4--6S-A W/POC ASSEMBLY	DA1132
5	1	SEE DETAIL	DUPLEX 10-4 ASSEMBLY	DA1111
4	1	SEE DETAIL	DUPLEX 10-3 ASSEMBLY	DA1109
3	1	SEE DETAIL	10-2 ASSEMBLY	DA1101
2	1	SEE DETAIL	10-2 PRESSURE TO TANK ASSEMBLY	DA1117
1	1	SEE DETAIL	LEFT HAND END CAP	DA1114
ITEM	QTY	MATERIAL	DESCRIPTION	PART NUMBER



7	1	SEE DETAIL	JOHNSON BLOCK ASSEMBLY KIT	DA1131-11.25
6	1	SEE DETAIL	RIGHT HAND ASSEMBLY	DA1115
5	1	SEE DETAIL	10-3 PRESSURE REDUCING ASSEMBLY	DA1120
4	2	SEE DETAIL	10-4 ASSEMBLY	DA1105
3	1	SEE DETAIL	10-2 PRESSURE TO PRESSURE ASSEMBLY	DA1119
2	1	SEE DETAIL	10-2 LEFT HAND TANK TO TANK ASSEMBLY	DA1141
1	1	SEE DETAIL	LEFT HAND END ASSEMBLY	DA1134
ITEM	REQ	MATERIAL	DESCRIPTION	PART NUMBER



8	1	SEE DETAIL	JOHNSON BLOCK ASSEMBLY KIT	DA1131-19.25
7	1	SEE DETAIL	RIGHT HAND END CAP ASSEMBLY	DA1113
6	1	SEE DETAIL	10-2 PRESSURE TO TANK ASSEMBLY	DA1119
5	2	SEE DETAIL	D03 PARALLEL CIRCUIT ASSEMBLY	DA1125
4	2	SEE DETAIL	D05 PARALLEL CIRCUIT ASSEMBLY	DA1123
3	1	SEE DETAIL	MID INLET ASSEMBLY	DA1112
2	1	SEE DETAIL	10-2 PRESSURE TO TANK ASSEMBLY	DA1117
1	1	SEE DETAIL	LEFT HAND END CAP ASSY	DA1116
ITEM	QTY	MATERIAL	DESCRIPTION	PART NUMBER



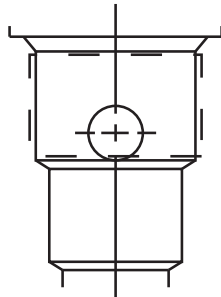
Datum-A-Industries, Inc.

Since 1981

Catalog 2010

COMMON CAVITY INTERCHANGE

08-2 CAVITY
(3/4-16 THREAD)
10-2 CAVITY
(7/8-14 THREAD)



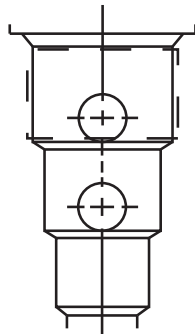
HYDRAFORCE
EATON/VICKERS/MODULAR
PARKER
COMPACT CONTROLS
DELTA
DELTROL
DANFOSS/FLUID CONTROLS
OILGEAR
COMMAND CONTROLS
STERLING
MANY OTHERS

8 SIZE

10 SIZE

VC08-2 VC10-2
C-8-2 C-10-2
C08-2 C10-2
CP8-2 CP10-2
40200005 40200000
080-2 100-2
FC-109 FC-316
N/A HS-600-2
N/A C1020
CAV02-2 CAV04-2
CONSULT FACTORY

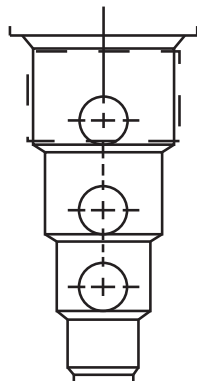
08-3 CAVITY
(3/4-16 THREAD)
10-3 CAVITY
(7/8-14 THREAD)



HYDRAFORCE
EATON/VICKERS/MODULAR
PARKER
COMPACT CONTROLS
DELTA
DELTROL
DANFOSS/FLUID CONTROLS
OILGEAR
COMMAND CONTROLS
STERLING
MANY OTHERS

VC08-3 VC10-3
N/A C-10-3
C08-3 C10-3
CP8-3 CP10-3
40200024 40200001
080-3 100-3
N/A FC-316A
N/A HS-600-3
N/A C1030
CAV02-3 CAV04-3
CONSULT FACTORY

08-4 CAVITY
(3/4-16 THREAD)
10-4 CAVITY
(7/8-14 THREAD)



HYDRAFORCE
EATON/VICKERS/MODULAR
PARKER
COMPACT CONTROLS
DELTA
DELTROL
DANFOSS/FLUID CONTROLS
OILGEAR
COMMAND CONTROLS
STERLING
MANY OTHERS

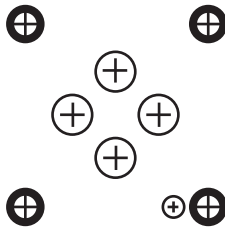
VC08-4 VC10-4
N/A C-10-4
C08-4 C10-4
CP8-4 CP10-4
40200029 40200002
080-4 100-4
N/A FC-316D
N/A HS-600-4
N/A C1040
CAV02-4 CAV04-4
CONSULT FACTORY



BOLT-ON VALVE INTERCHANGE

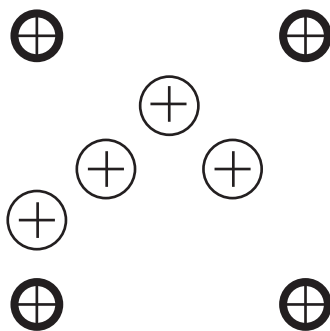
VALVE MODELS

ISO 03
(D03)



CONTINENTAL	VS5M, ED03M
DELTA	SERIES 4000
DENISON	A-3D01, D2D02-35
DOUBLE A	Q*-3
PARKER	D1VW
RACINE	1/8"
REXROTH	WE6, 4WRA6
RIVETT	65**-03
RUCKER/YUKEN	DSGR-01
VICKERS	SDG4V
NACHI	SSG01
RACINE-BOSCH	NG6

ISO 05
(D05)



CONTINENTAL	VS12M, ED05M
DENISON	DID04, 3D02, A-D2D04
DOUBLE A	Q*-5
PARKER	D3W
RACINE	1/4"
REXROTH	WE8, WE10
RIVETT	65**-02
RUCKER/YUKEN	DSG-03
VICKERS	DG4S4
NACHI	SSG03, E10, E20
RACINE-BOSCH	NG10



Datum-A-Industries, Inc.

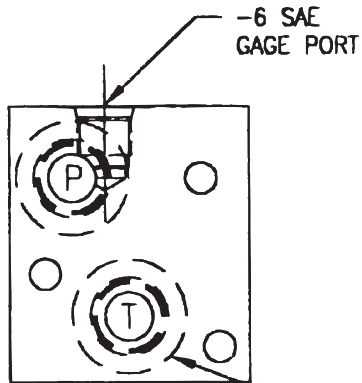
Since 1981

Catalog 2010

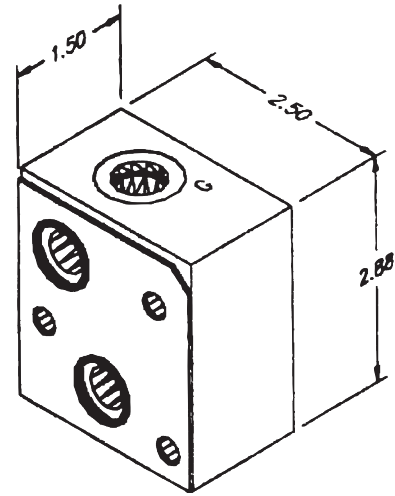
RH END CAP

P/N DA1113

*TO HAVE PRESSURE AND TANK PORTS
ON RIGHT END OF MANIFOLD*



2X -8 SAE
(OPP SIDE)

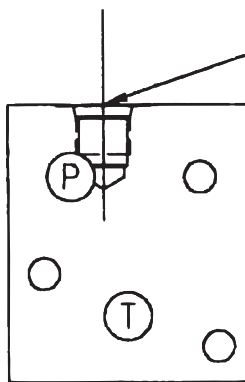


LH END CAP

P/N DA1114

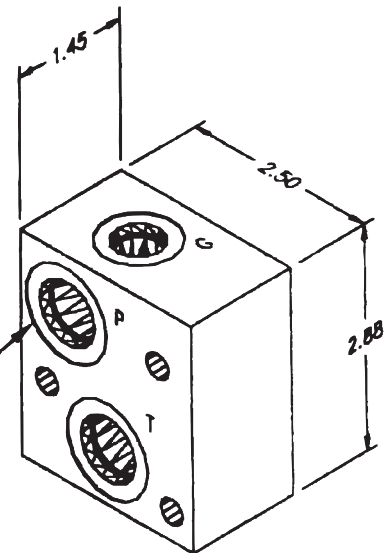
(SEAL PLATE NOT REQD)

*TO HAVE PRESSURE AND TANK PORTS
ON LEFT END OF MANIFOLD*



-6 SAE
GAGE PORT

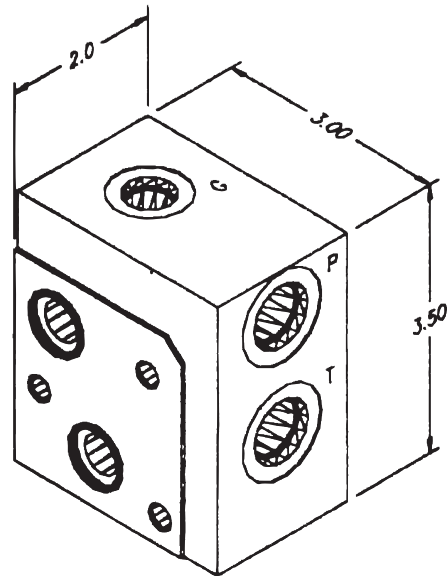
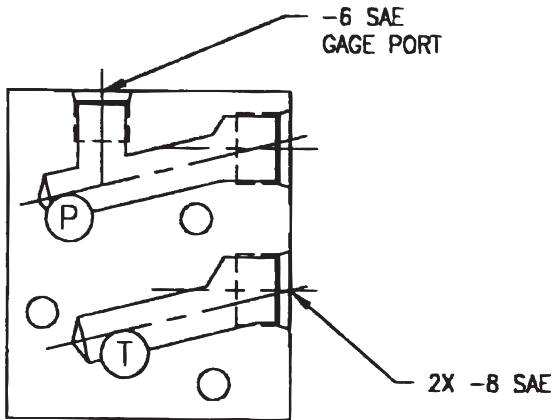
2X -8 SAE





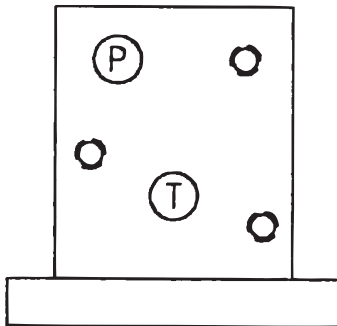
MID INLET
P/N DA1112

TO HAVE PRESSURE AND TANK PORTS
LOCATED ON SIDE OF MANIFOLD

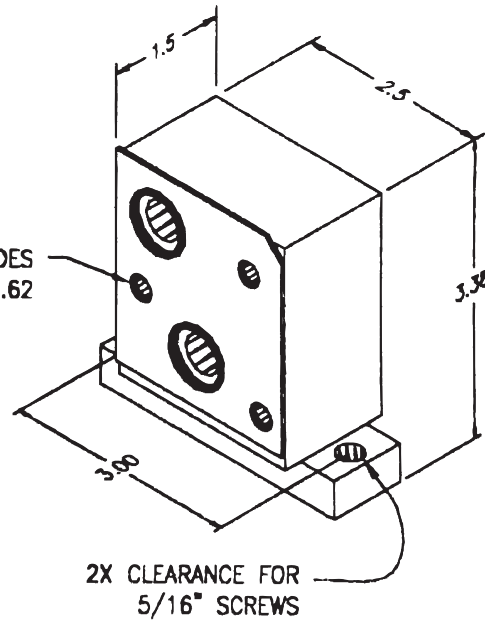


MID SUPPORT / COUPLER
P/N DA1130

FOR SEVERE (SHOCK) APPLICATIONS WHERE
EXTRA SUPPORT IS NEEDED. FOR LONGER
STACKS (OVER 21") OF MODULES.



3X FM BOTH SIDES
5/16-18UNC ∇ .62





Datum-A-Industries, Inc.

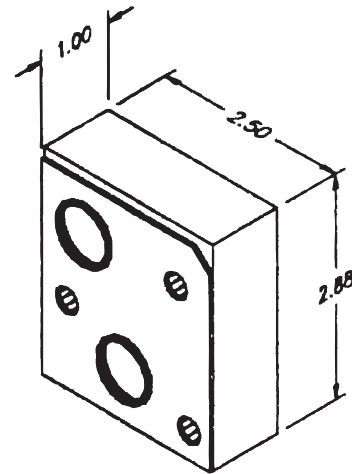
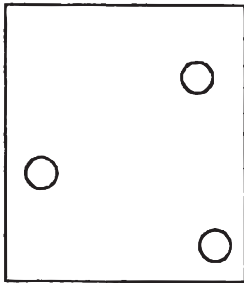
Since 1981

Catalog 2010

RH BLANK CAP

P/N DA1115

TO BLOCK OR CAP RIGHT SIDE OF MANIFOLD.

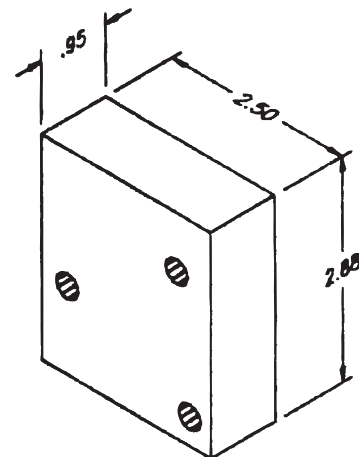
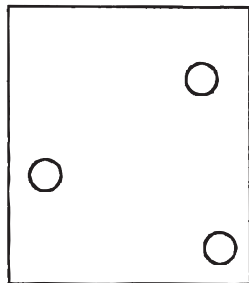


LH BLANK CAP

P/N DA1116

(SEAL PLATE NOT REQD)

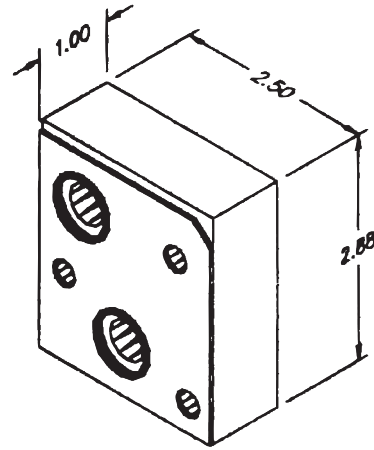
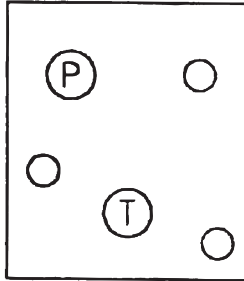
TO BLOCK OR CAP LEFT SIDE OF MANIFOLD.





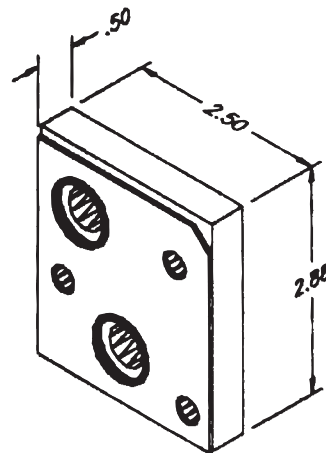
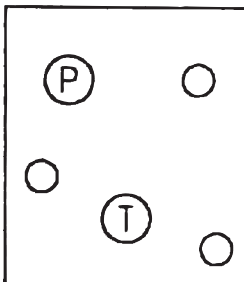
1" SPACER
P/N DA1127

*USED TO SPACE PORTS FARTHER APART,
ALLOW ROOM FOR ELECTRICAL COILS, ETC.*



1/2" SPACER
P/N DA1128

*USED TO SPACE PORTS FARTHER APART,
ALLOW ROOM FOR ELECTRICAL COILS, ETC.*





Datum-A-Industries, Inc.

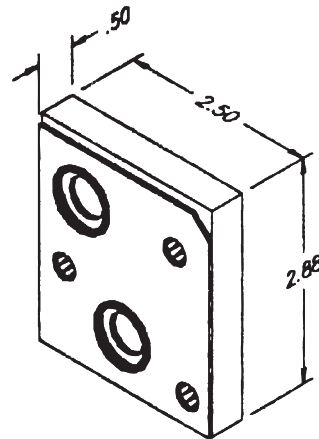
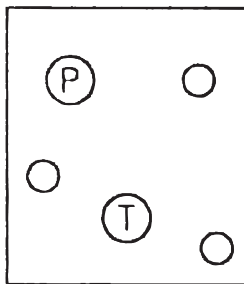
Since 1981

Catalog 2010

BLOCKING / ORIFICE MODULE

P/N DA1129

*TO BLOCK OR RESTRICT FLOW IN
PRESSURE AND/OR TANK LINES.*



**P AND T HAVE BEEN SPOT DRILLED FOR CONVERSION
INTO CUSTOM MODULES AT FACTORY OR BY CUSTOMER**

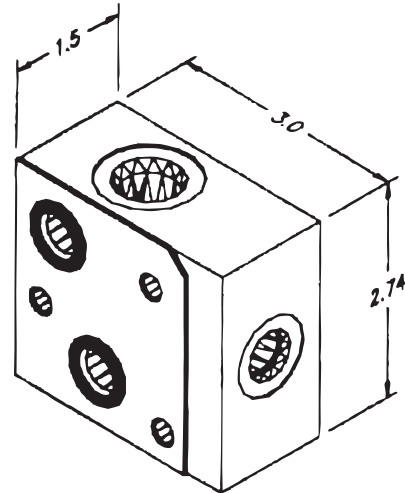
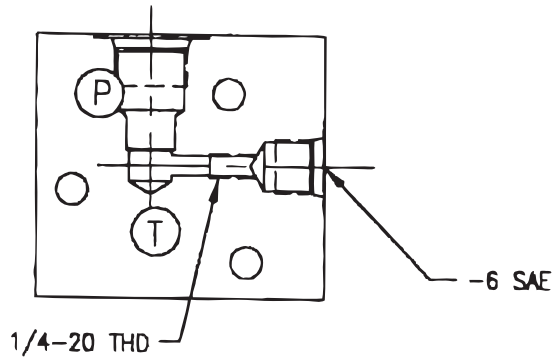
CUSTOMIZED BLOCKS AVAILABLE		
	P DRILLED THRU	T DRILLED THRU
DA1129-1	Ø.50	BLOCKED
DA1129-2	BLOCKED	Ø.50
DA1129-3-XXX	SPECIFY .031-.500	BLOCKED
DA1129-4-XXX	BLOCKED	SPECIFY .031-.500
DA1129-5-XXX-XXX	SPECIFY .031-.500	SPECIFY .031-.500

CONSULT FACTORY FOR YOUR SPECIAL NEEDS



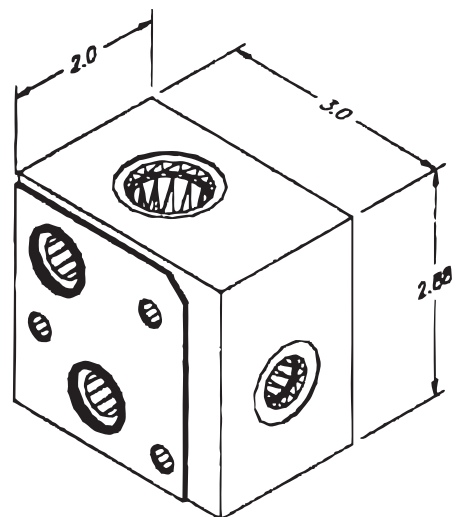
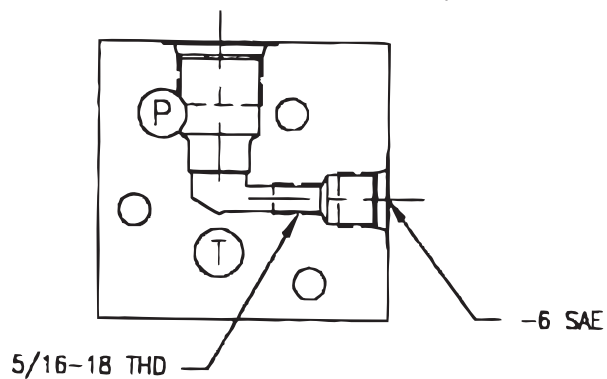
08-2 COMMON CAVITY
P/N DA1100

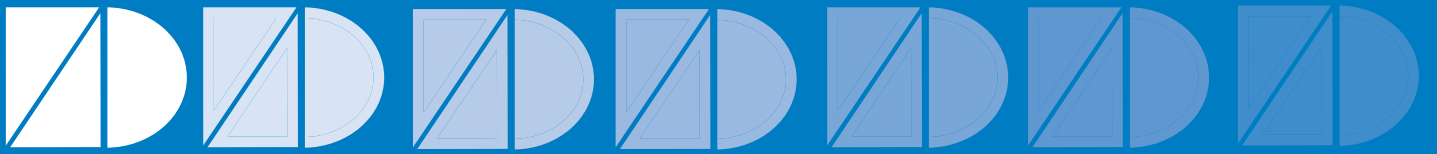
FOR 8 SIZE 2-WAY VALVES, NEEDLE VALVES, ETC.



10-2 COMMON CAVITY
P/N DA1101

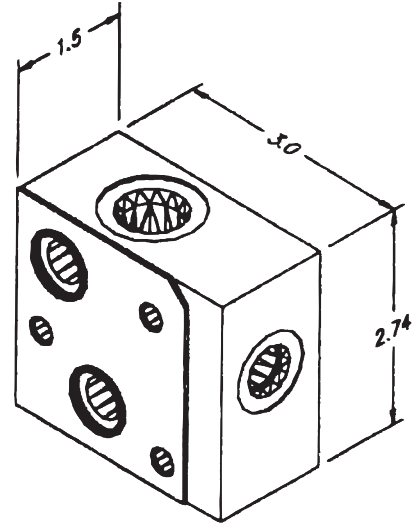
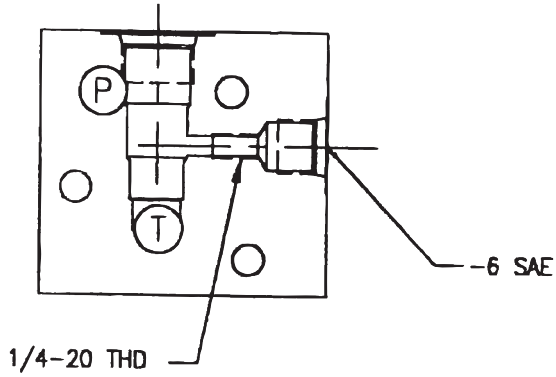
FOR 10 SIZE 2-WAY VALVES, NEEDLE VALVES, ETC.





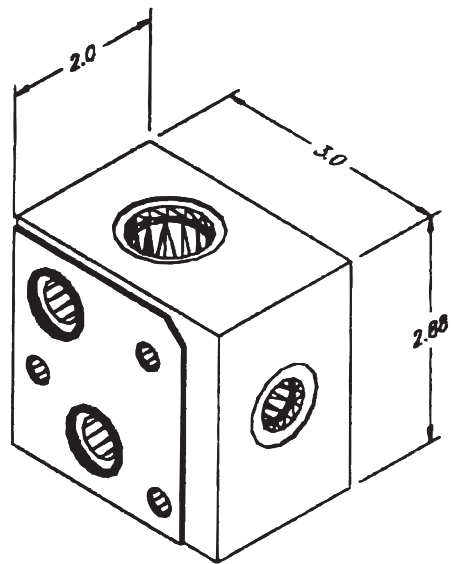
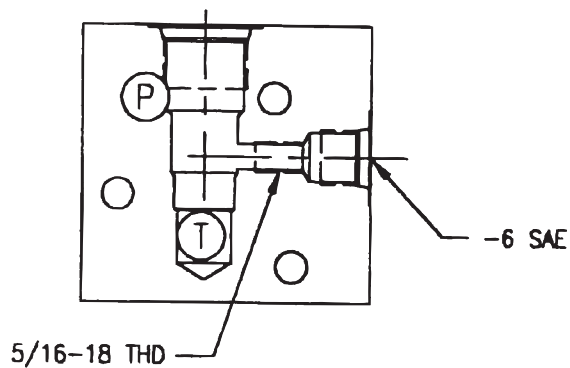
08-3 COMMON CAVITY
P/N DA1102

FOR 8 SIZE 3-WAY VALVES.



10-3 COMMON CAVITY
P/N DA1103

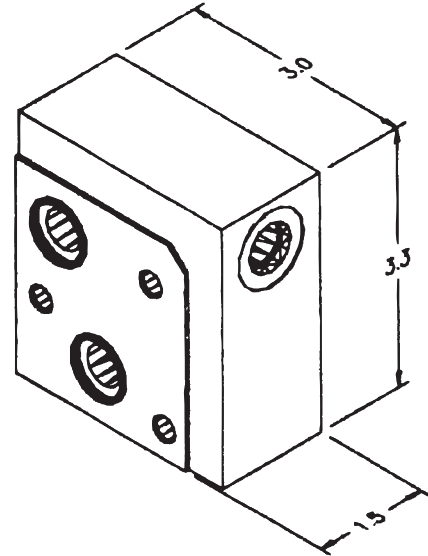
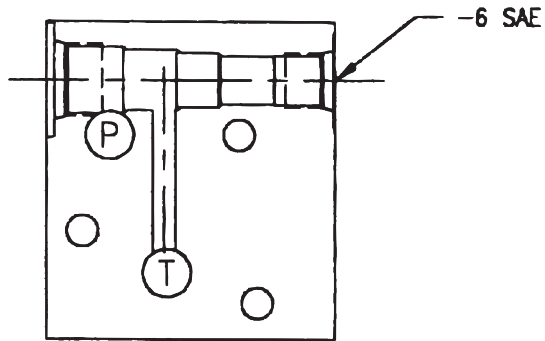
FOR 10 SIZE 3-WAY VALVES.





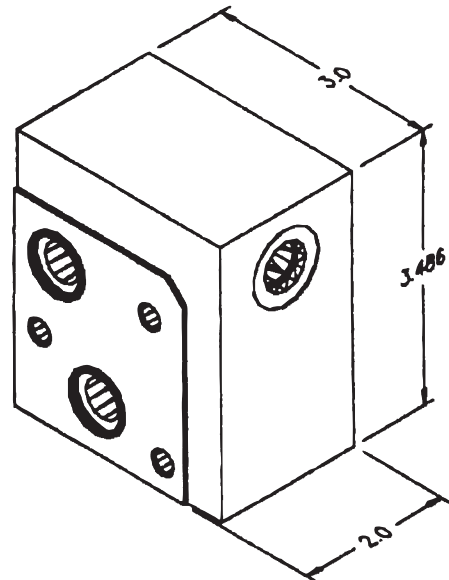
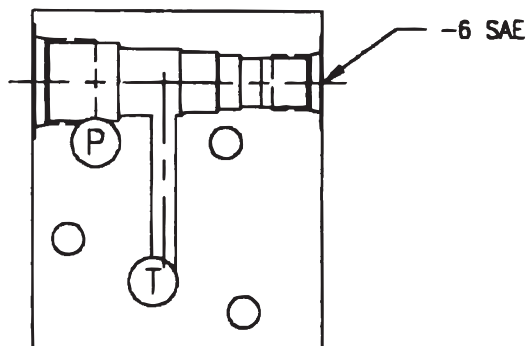
08-3 HORIZ
P/N DA1137

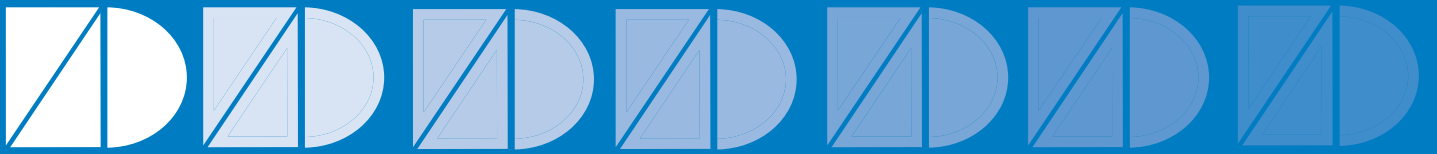
FOR 8 SIZE 3-WAY VALVES



10-3 HORIZ
P/N DA1138

FOR 10 SIZE 3-WAY VALVES





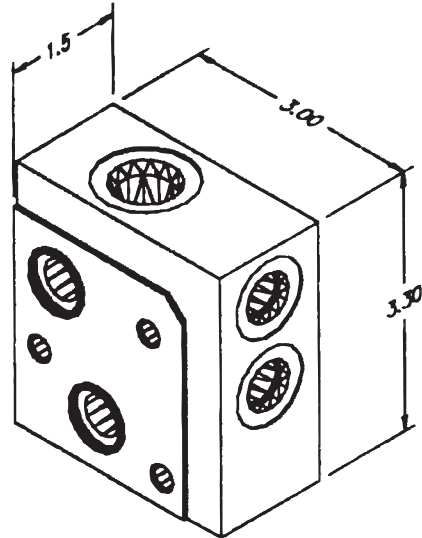
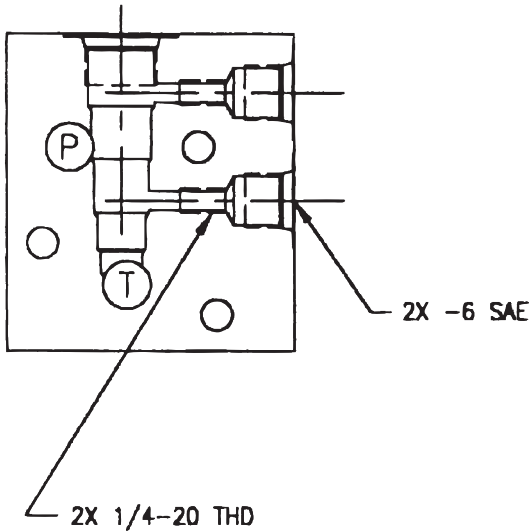
Datum-A-Industries, Inc.

Since 1981

Catalog 2010

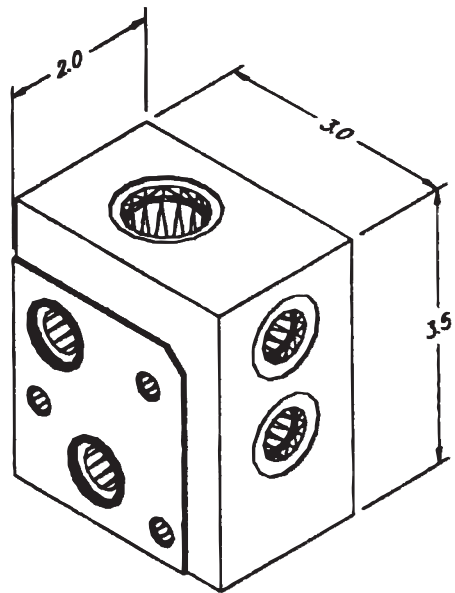
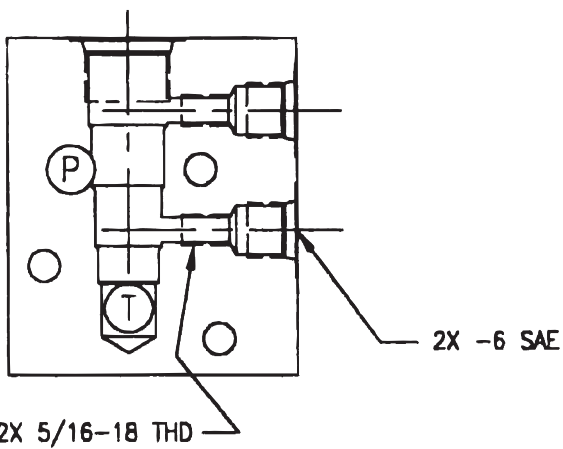
08-4 COMMON CAVITY
P/N DA1104

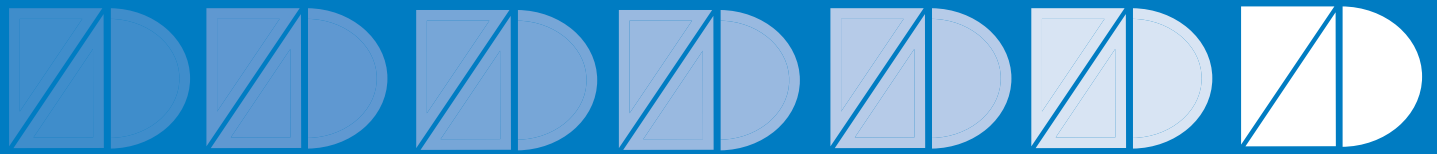
FOR 8 SIZE 4-WAY VALVES



10-4 COMMON CAVITY
P/N DA1105

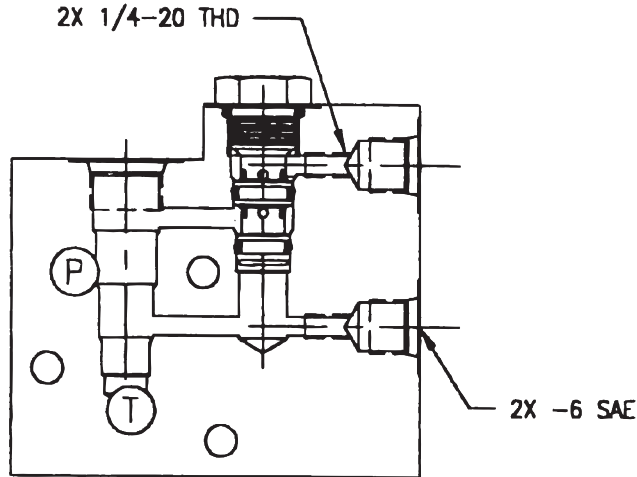
FOR 10 SIZE 4-WAY VALVES



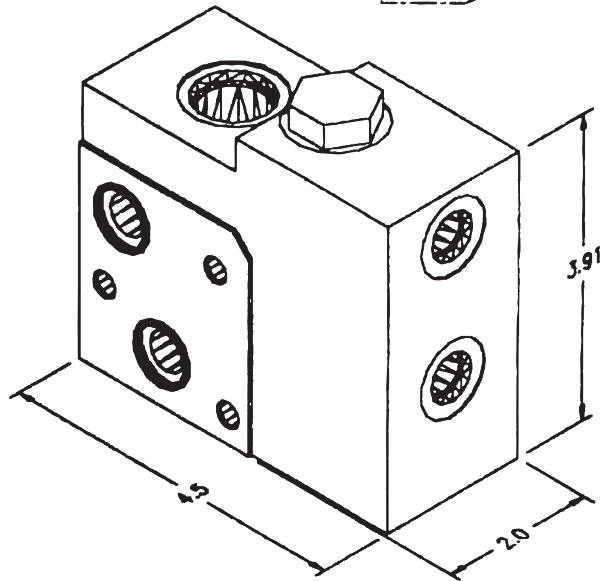
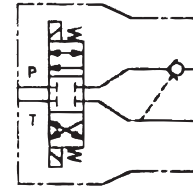


08-4 W/ POC (LOAD HOLDING)
(INCLUDES P.O. CHECK)
P/N DA1135

FOR 8 SIZE 4-WAY VALVES

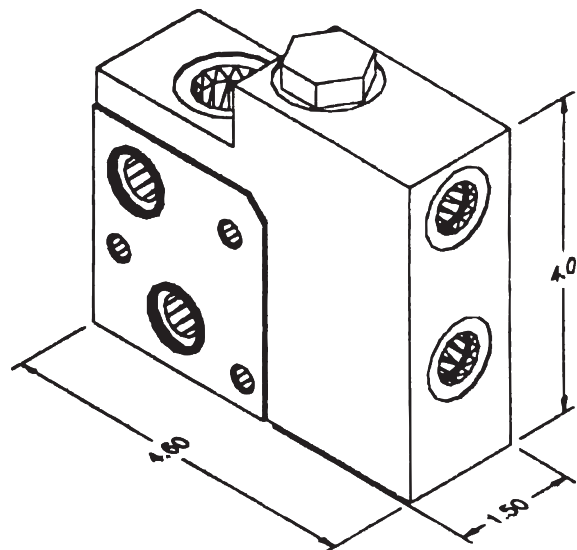
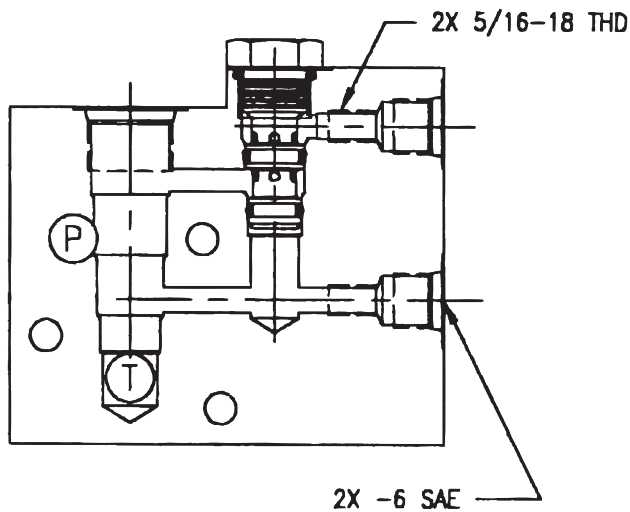


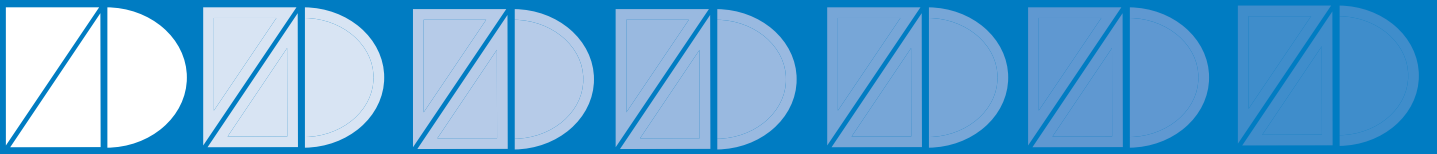
TYPICAL
CIRCUIT
(REF)



10-4 W/ POC (LOAD HOLDING)
(INCLUDES P.O. CHECK)
P/N DA1134

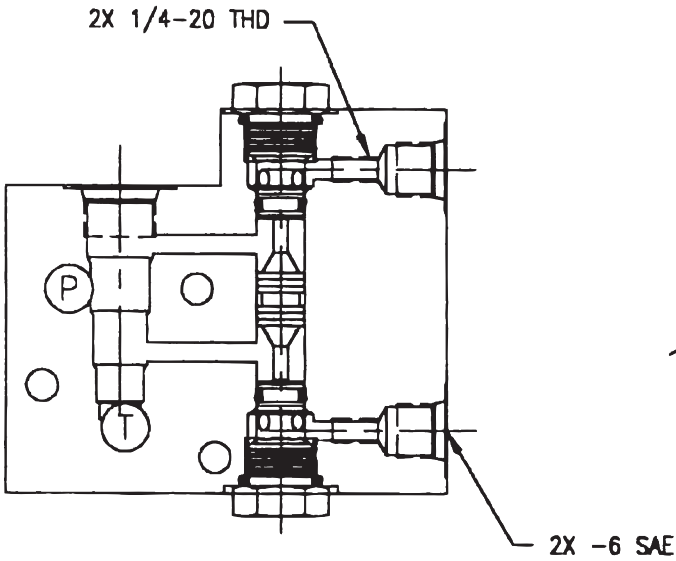
FOR 10 SIZE 4-WAY VALVES



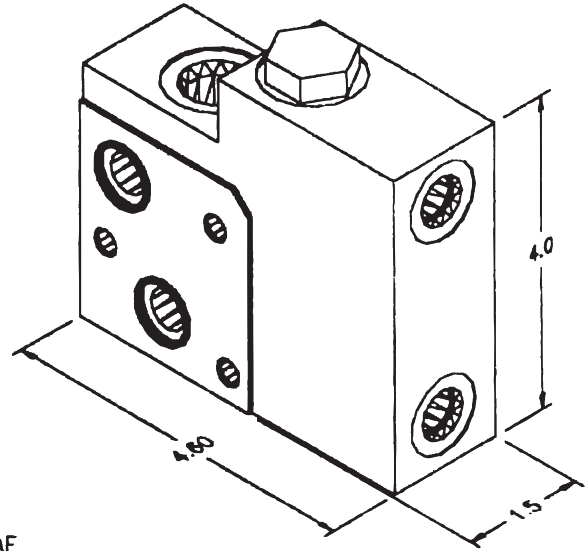
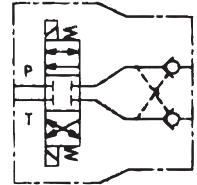


**08-4 W/ DUAL POC (LOAD HOLDING)
DUAL PILOT OPERATED CHECKS INCLUDED
P/N DA1133**

FOR 8 SIZE 4-WAY VALVES

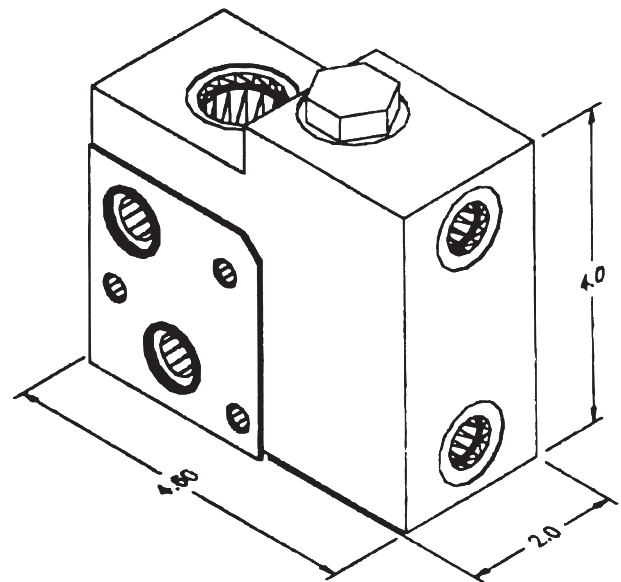
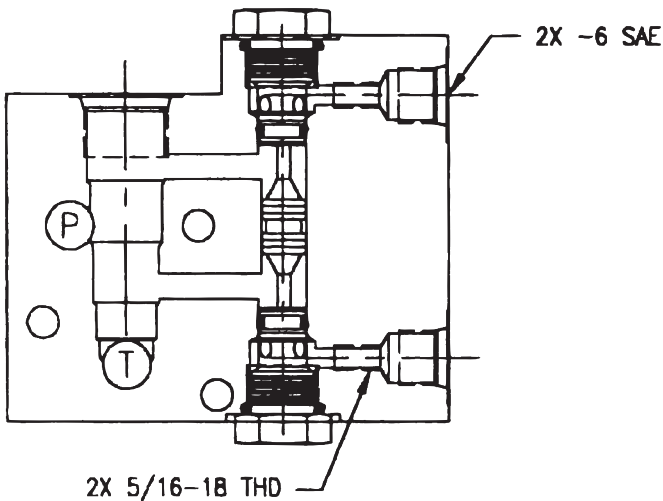


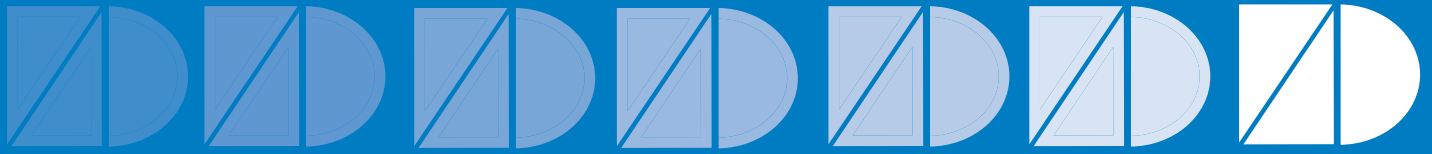
TYPICAL
CIRCUIT
(REF)



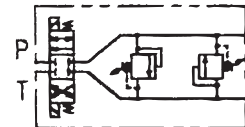
**10-4 W/ DUAL POC (LOAD HOLDING)
DUAL PILOT OPERATED CHECKS INCLUDED
P/N DA1132**

FOR 10 SIZE 4-WAY VALVES



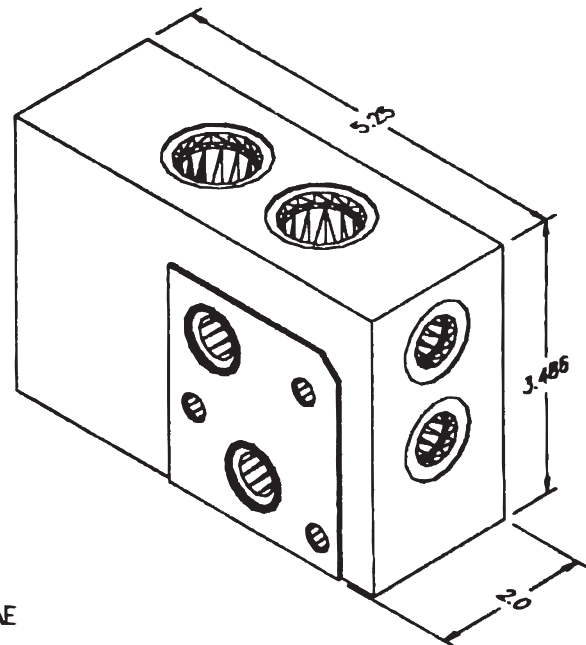
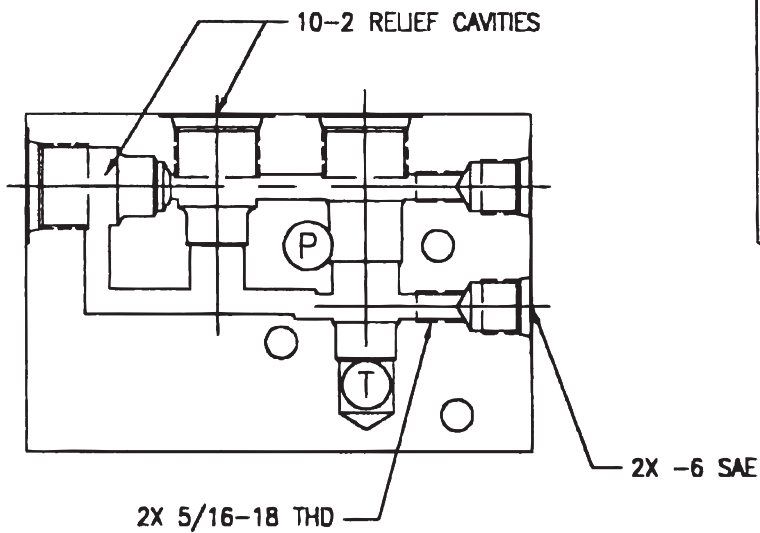


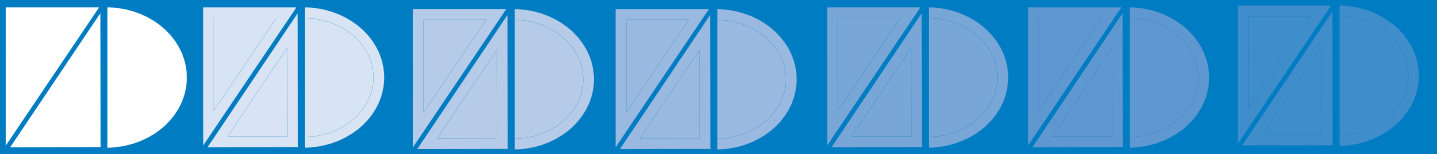
TYPICAL
CIRCUIT
(REF)



**10-4 COMMON CAVITY
W/ DUAL CROSS-OVER RELIEF
P/N DA1139**

FOR 10 SIZE 4-WAY VALVES

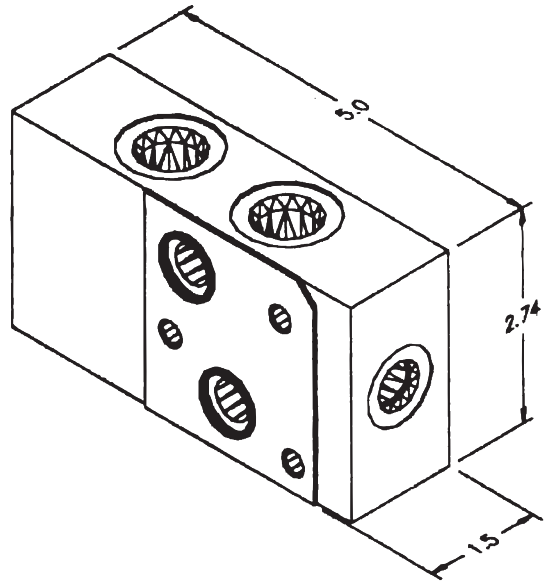
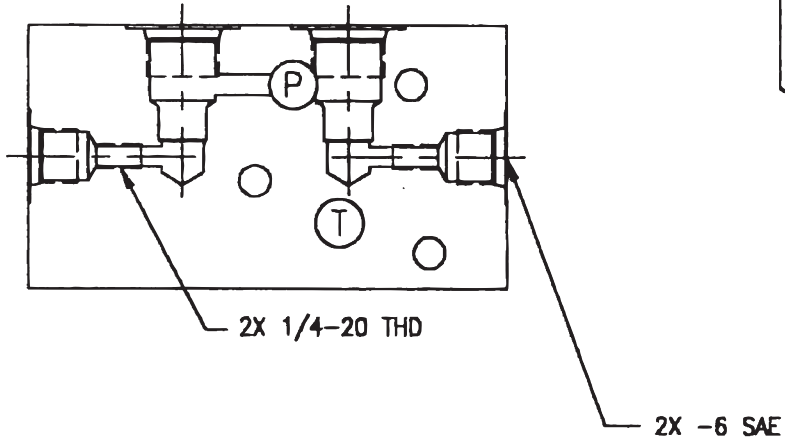




DUPLEX 08-2 COMMON CAVITY

P/N DA1106

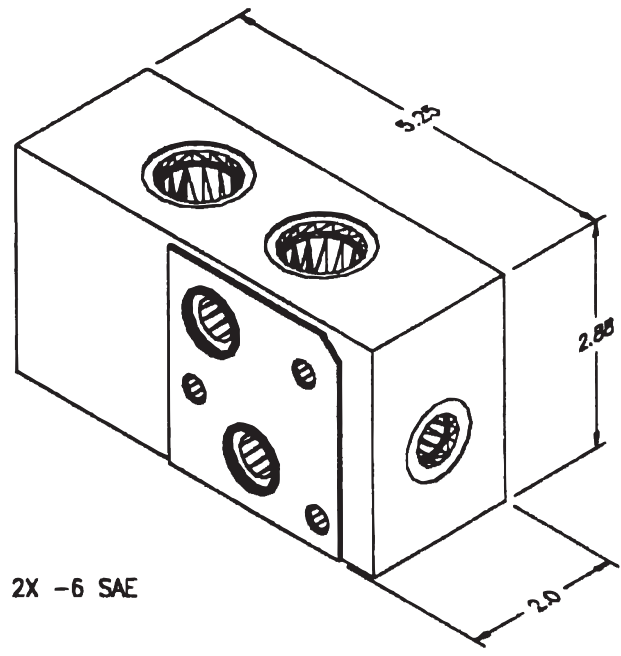
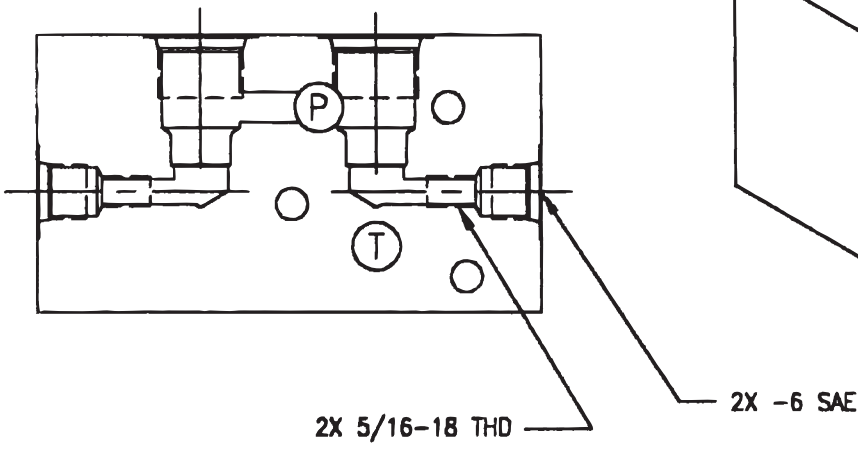
FOR 8 SIZE 2-WAY VALVES



DUPLEX 10-2 COMMON CAVITY

P/N DA1107

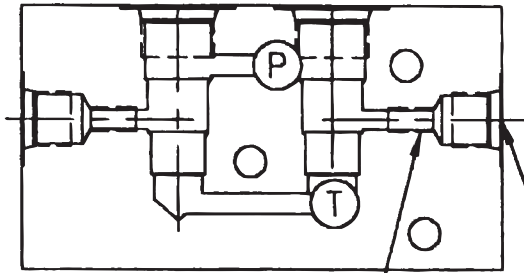
FOR 10 SIZE 2-WAY VALVES





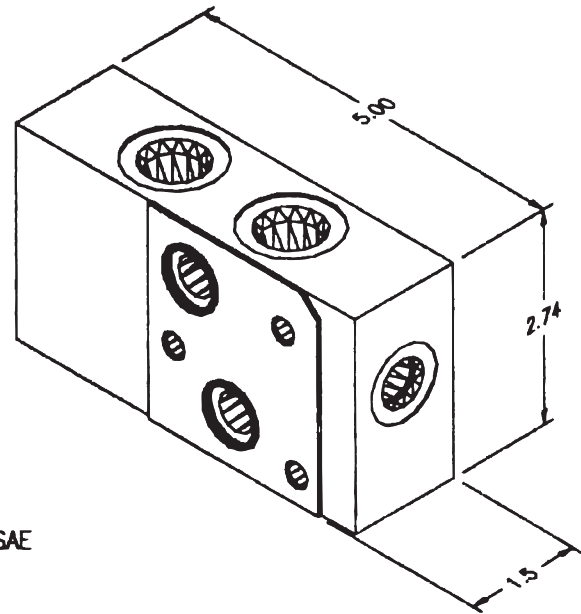
DUPLEX 08-3 COMMON CAVITY
P/N DA1108

FOR 8 SIZE 3-WAY VALVES



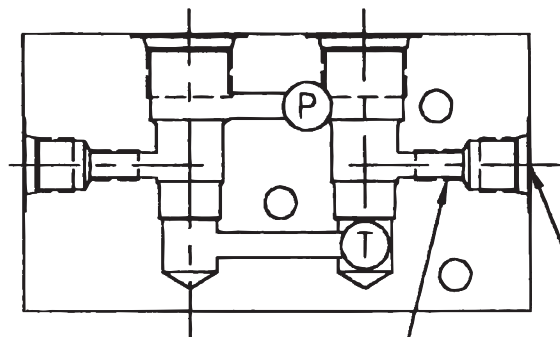
2X 1/4-20 THD

2X -6 SAE



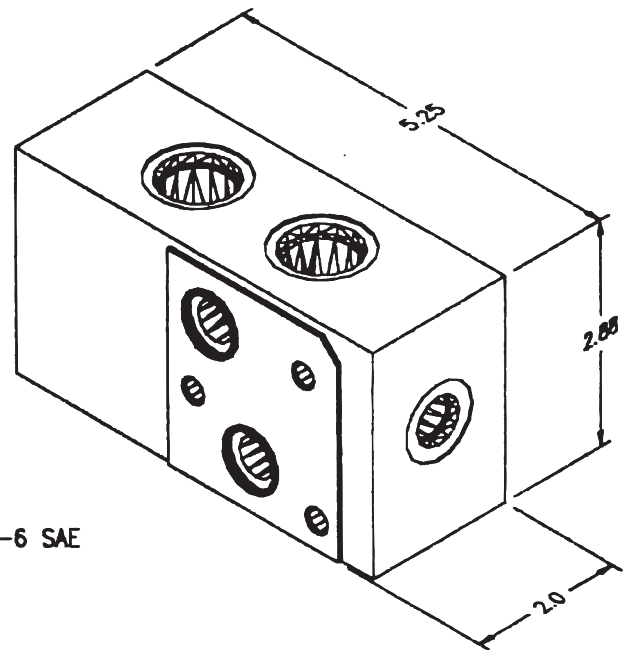
DUPLEX 10-3 COMMON CAVITY
P/N DA1109

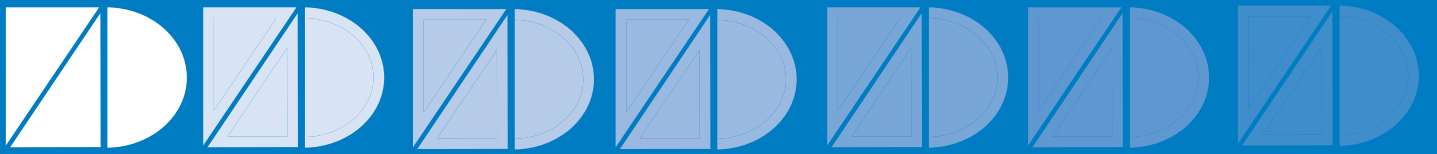
FOR 10 SIZE 3-WAY VALVES



2X 5/16-18 THD

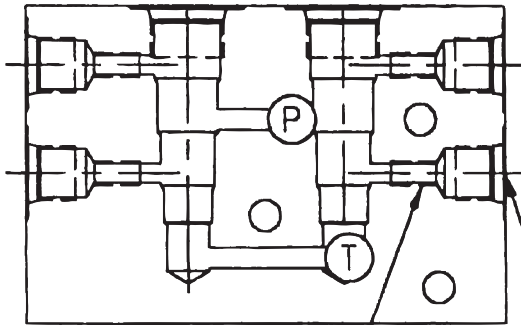
2X -6 SAE



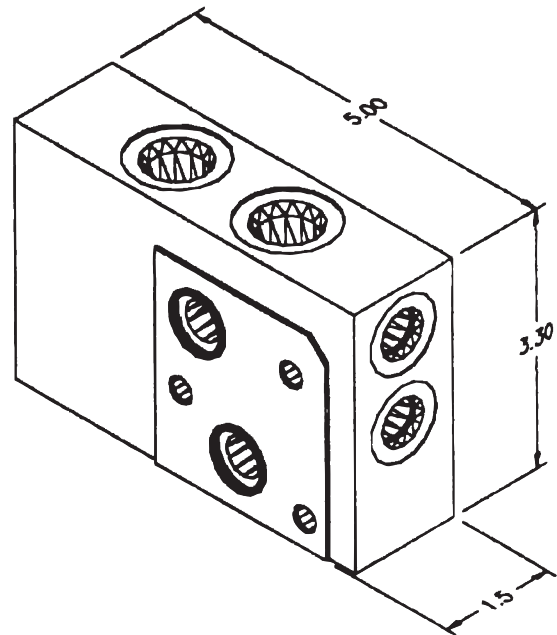


DUPLEX 08-4 COMMON CAVITY
P/N DA1110

FOR 8 SIZE 4-WAY VALVES



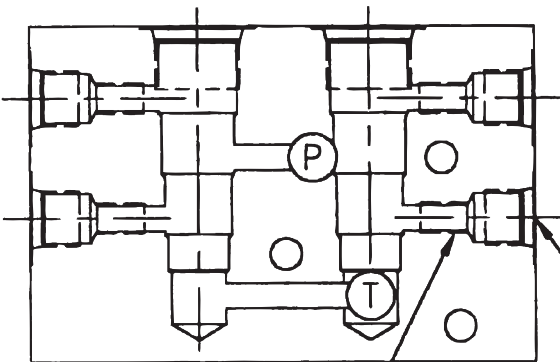
4X 1/4-20 THD



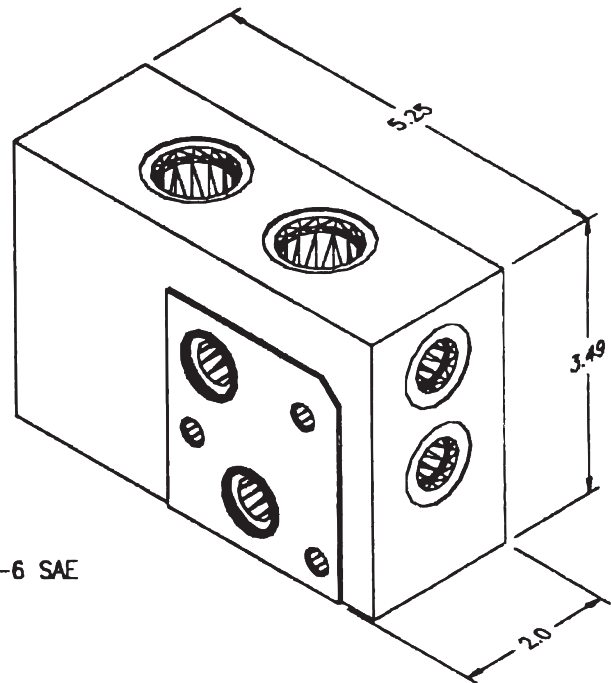
4X -6 SAE

DUPLEX 10-4 COMMON CAVITY
P/N DA1111

FOR 10 SIZE 4-WAY VALVES



4X 5/16-18 THD



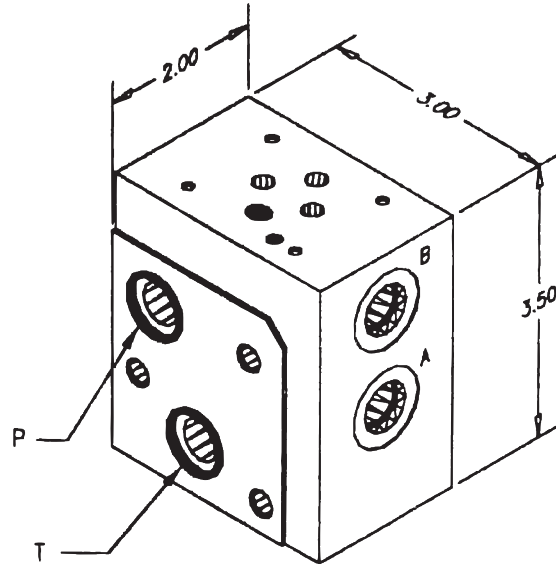
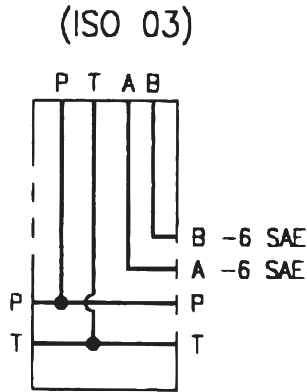
4X -6 SAE



ISO 03 PARALLEL CIRCUIT

P/N DA1125

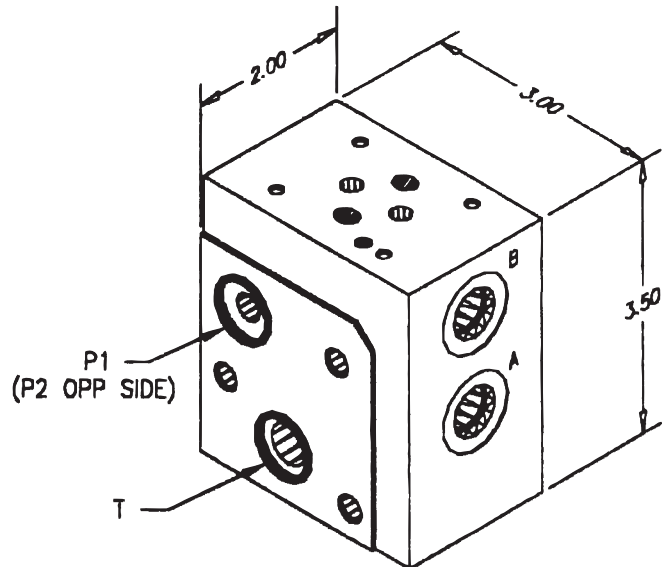
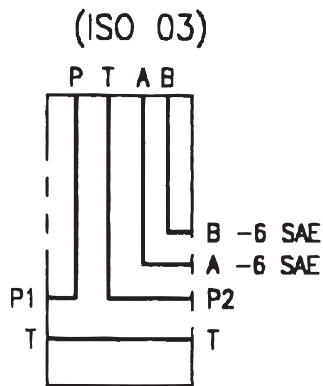
FOR ISO 03 (DO3) VALVES



ISO 03 SERIES CIRCUIT

P/N DA1126

FOR ISO 03 (DO3) VALVES





Datum-A-Industries, Inc.

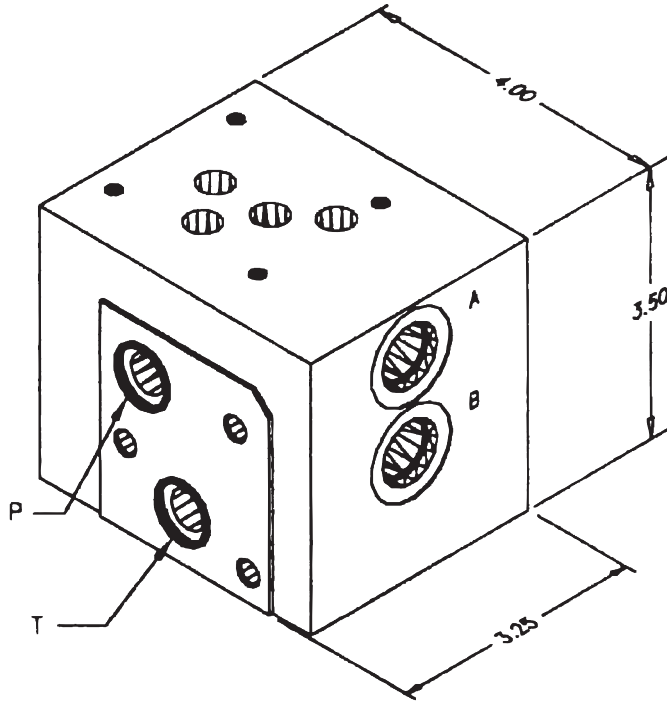
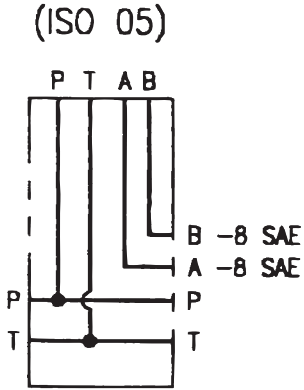
Since 1981

Catalog 2010

ISO 05 PARALLEL CIRCUIT

P/N DA1123

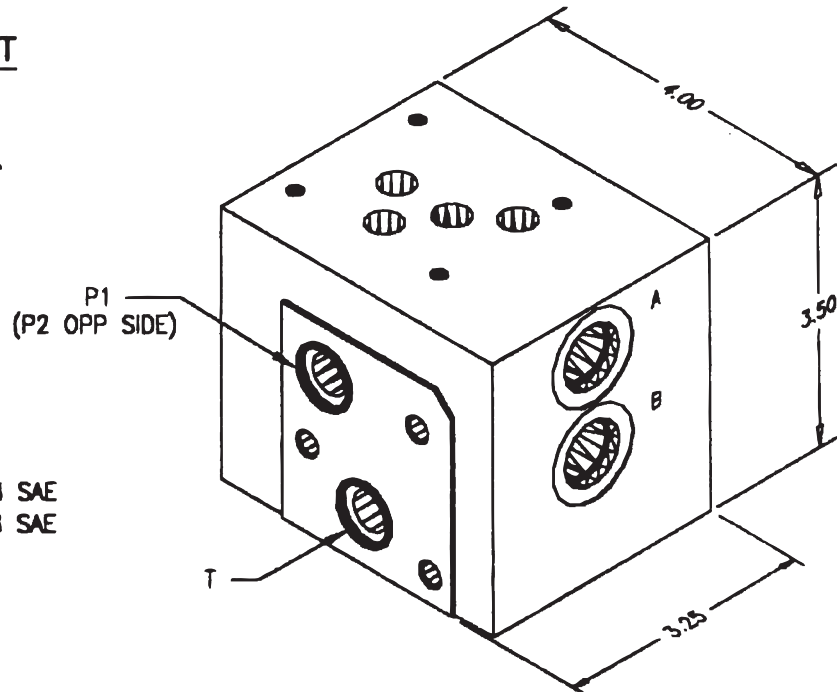
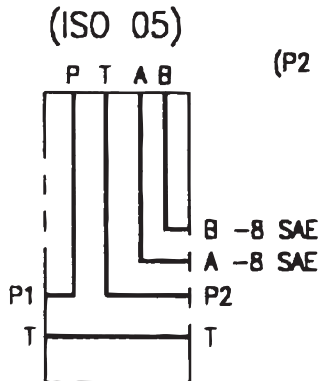
FOR ISO 05 (D05) VALVES



ISO 05 SERIES CIRCUIT

P/N DA1124

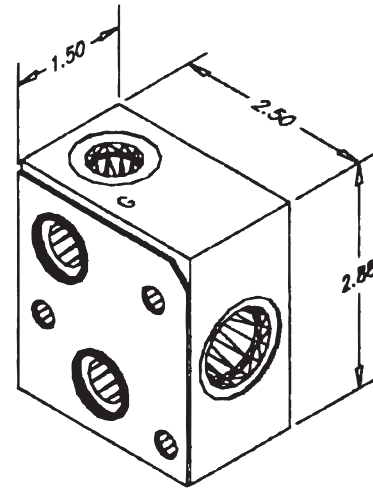
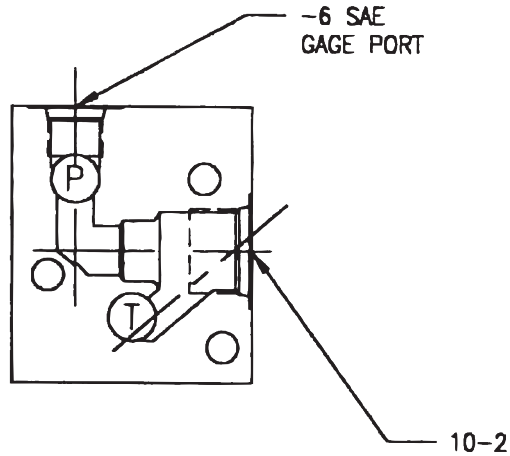
FOR ISO 05 (D05) VALVES





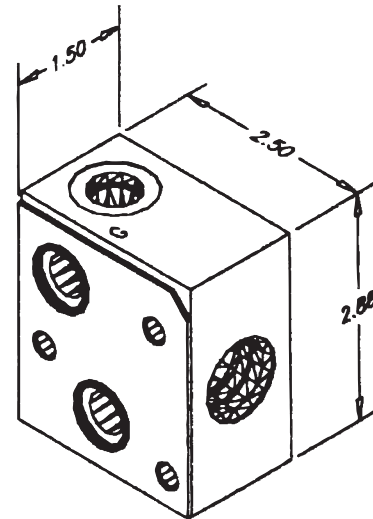
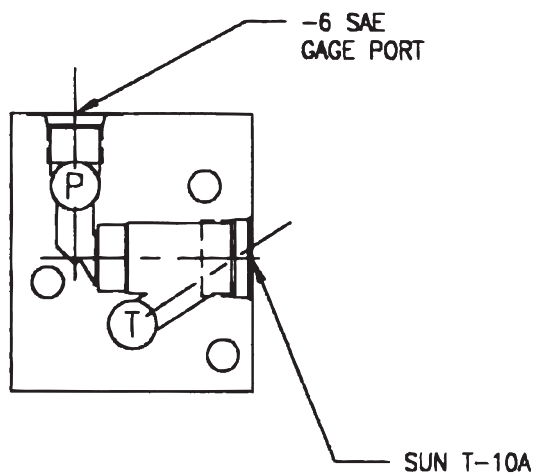
**10-2 COMMON CAVITY
PRESSURE TO TANK
P/N DA1117**

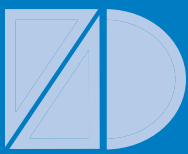
FOR 10 SIZE RELIEF VALVE, DUMP VALVE, ETC.



**SUN T-10A CAVITY
PRESSURE TO TANK
P/N DA1118**

FOR SUN RELIEF VALVE, ETC.





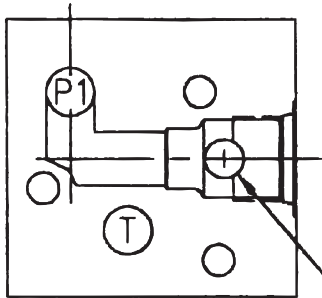
Datum-A-Industries, Inc.

Since 1981

Catalog 2010

**10-2 COMMON CAVITY
PRESSURE TO PRESSURE
P/N DA1119**

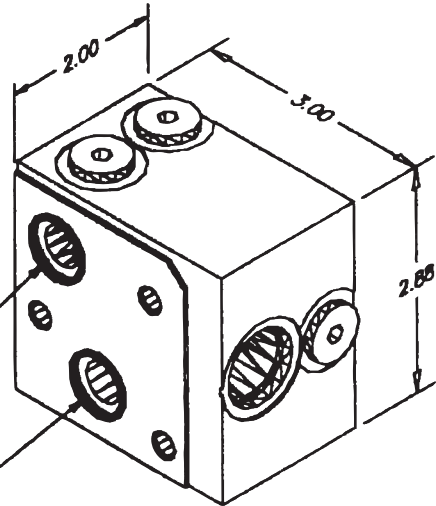
*FOR 10 SIZE 2-WAY VALVES, NEEDLE VALVES,
FLOW CONTROL, ETC.*



TO P2

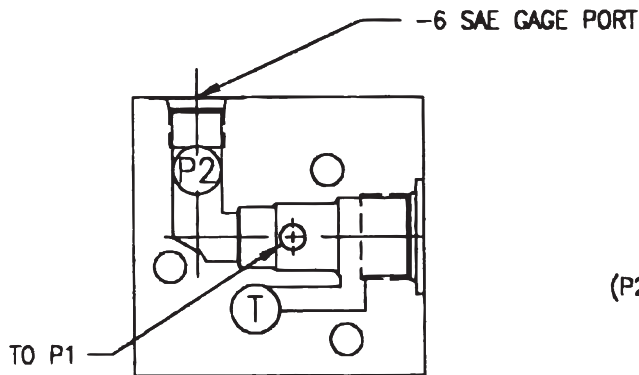
P1
(P2 OPP SIDE)

T



**10-3 COMMON CAVITY
P/N DA1120**

*FOR 10 SIZE PRESSURE REDUCING VALVES,
SEQUENCE VALVES, ETC.*

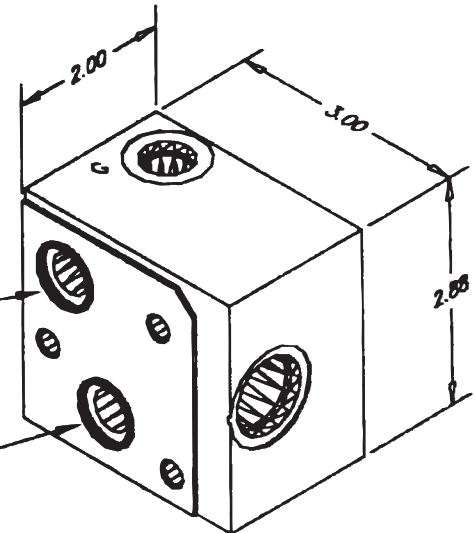


TO P1

-6 SAE GAGE PORT

P1
(P2 OPP SIDE)

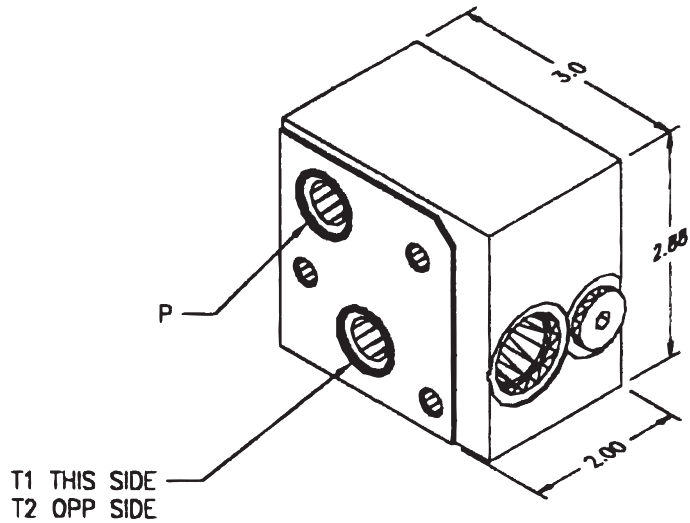
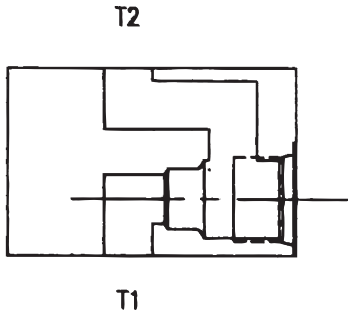
T





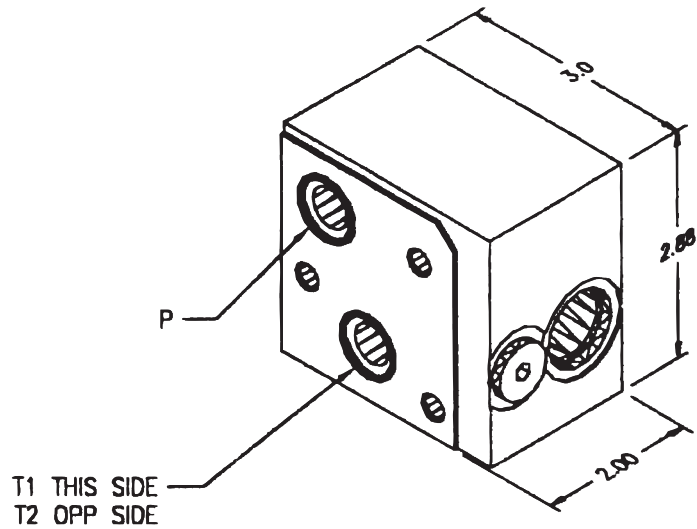
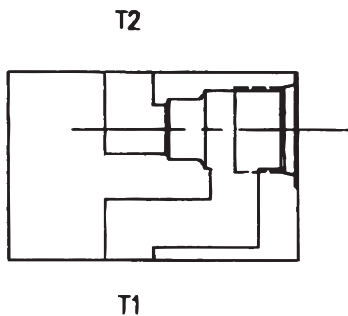
**10-2 COMMON CAVITY
TANK TO TANK
P/N DA1140**

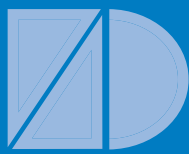
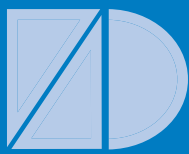
FOR TANK LINE CHECK VALVES, ETC.



**10-2 COMMON CAVITY
TANK TO TANK
P/N DA1141**

FOR TANK LINE CHECK VALVES, ETC.





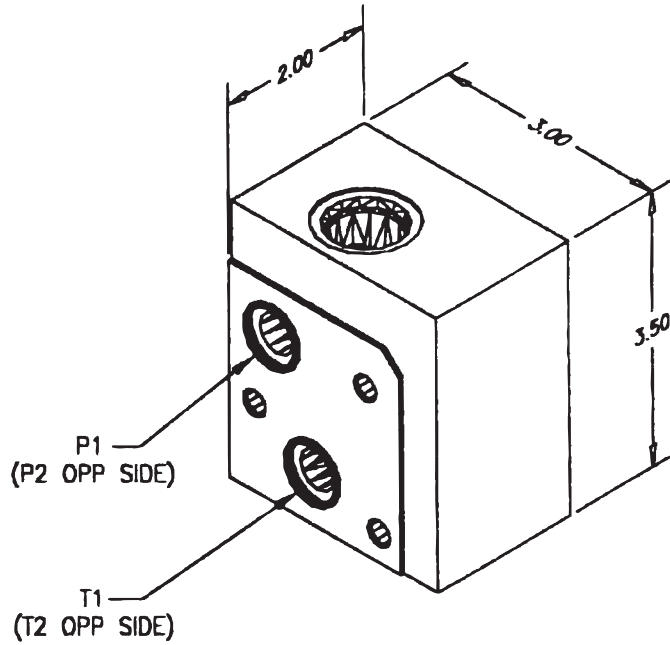
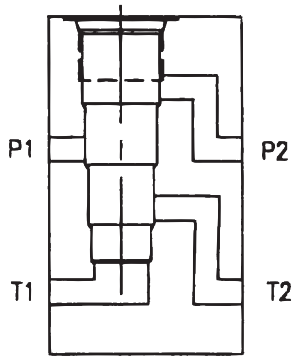
Datum-A-Industries, Inc.

Since 1981

Catalog 2010

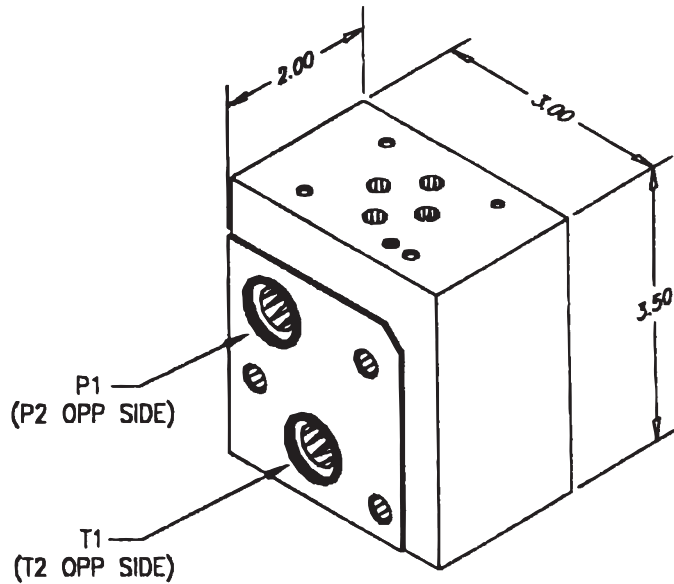
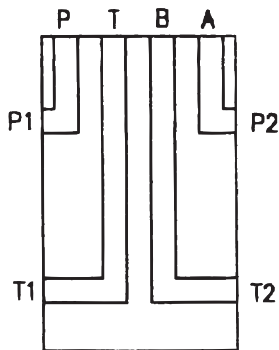
IN LINE 10-4 COMMON CAVITY
P/N DA1121

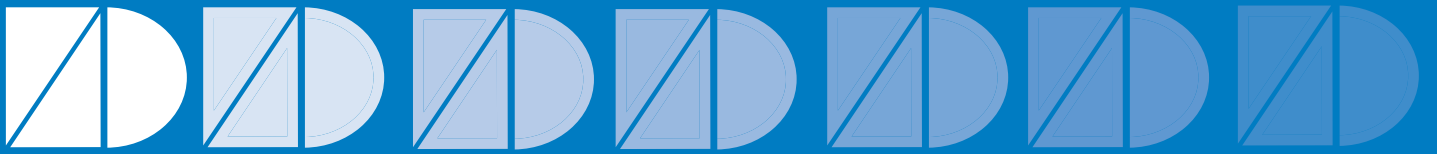
FOR 10 SIZE 4-WAY VALVES



IN LINE ISO 03
P/N DA1122

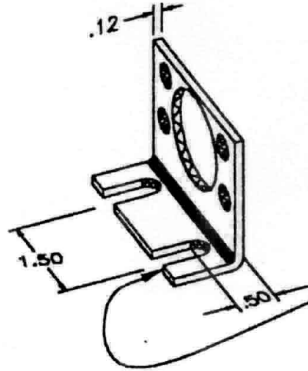
FOR ISO 03 (DO3) VALVES





MOUNTING BRACKET

DA1002

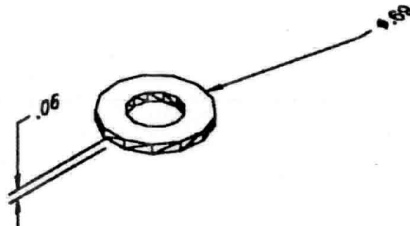


SAME BRACKET WORKS
RIGHT HAND AND LEFT HAND.

SLOTTED FOR 5/16 SCREWS

WASHER

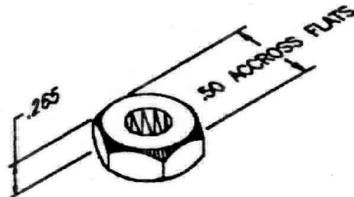
DA1025



5/16 SAE WASHER, GRADE 2, ZINC PLATED

NUT

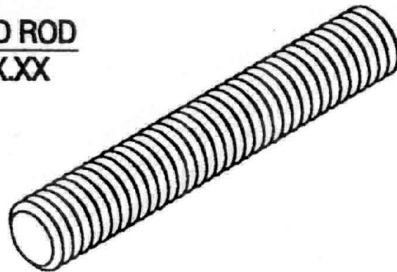
DA1022



5/16-18 UNC, GRADE 8, ZINC PLATED
CAUTION! DO NOT USE A LOWER GRADE.

THREADED ROD

DA1021-XX.XX



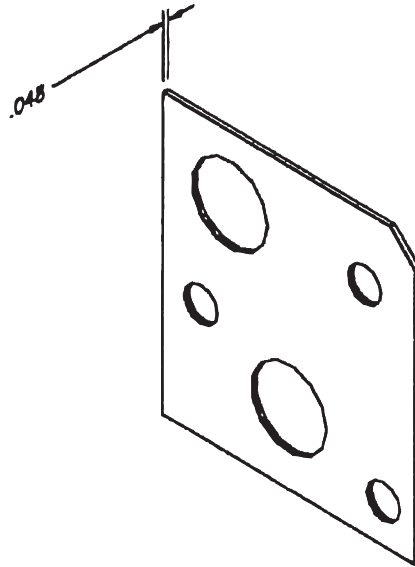
-XX.XX = LENGTH OF ROD IN INCHES
(.25 INCREMENTS)

5/16-18 ALLOY THREADED ROD
GRADE ASTM A193 B7
CAUTION! DO NOT USE A LOWER GRADE.

6 FT AND 12 FT LENGTHS AVAILABLE
FOR CUSTOM CUT TO LENGTH APPLICATIONS.



SEAL PLATE
P/N DA1001



USE WITH -016 O-RINGS
2 REQ'D PER PLATE

O-RING
P/N DA1010-1



ARP 568
-016

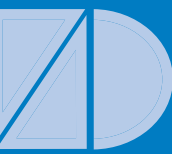
.614±.005 I.D.
.070±.003 C.S.

BUNA N
90 DUROMETER

*OTHER COMPOUNDS AND DUROMETERS AVAILABLE
(CONSULT FACTORY)*



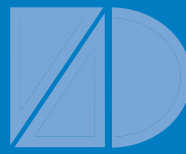
Datum-A-Industries, Inc.



Since 1981



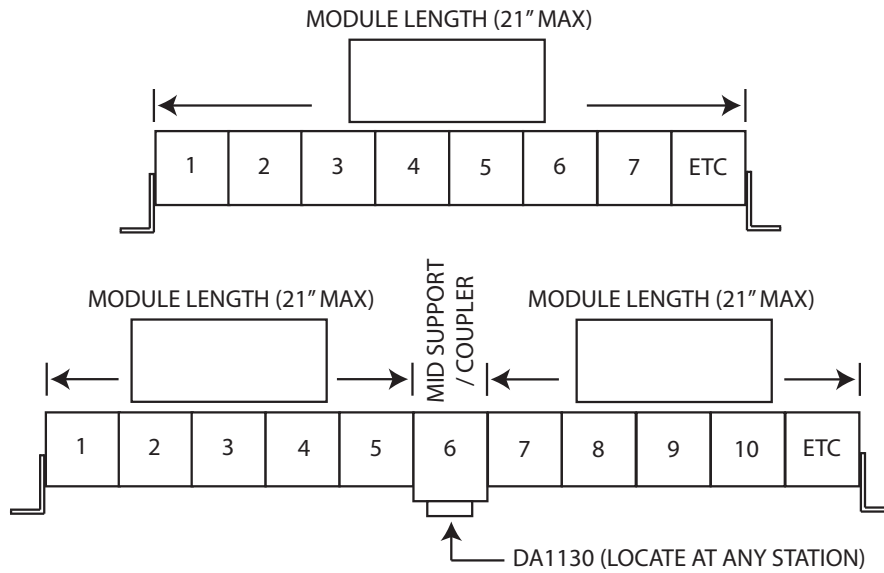
Catalog 2010



JOHNSON BLOCK

MANIFOLD SYSTEM™

ASSEMBLY ORDER WORKSHEET



STATION	PART NUMBER	DESCRIPTION	LENGTH	PRICE
1				
2				
3				
4				
5				
6				
7				
8				
9				
10				
11				
12				
13				
14				
15				
16				
ASSEMBLY KIT (INCLUDES FOOT BRACKETS & HARDWARE)				
TOTAL PRICE				

QUANTITY DISCOUNT MULTIPLIER

1-5 = 1.0

6-14 = .95

15-24 = .93

25-49 = .9

MULTIPLIER

QTY REQ'D

NET PRICE EACH

SPECIAL INSTRUCTIONS: _____

CUSTOMER _____ P.O. _____ DATE _____

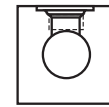


HEADER MANIFOLDS

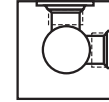
Use header manifolds to distribute from one supply source to multiple outlets.

Inlet port comes one size larger than output ports.

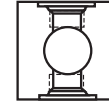
480 different variations in stock and ready to ship same day.



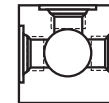
0 DEGREE
PAGES 38-39



90 DEGREE
PAGES 40-41



180 DEGREE
PAGES 42-43



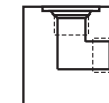
270 DEGREE
PAGES 44-45



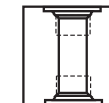
JUNCTION BLOCKS

Use Junction Blocks to join, change direction, combine, or split lines.

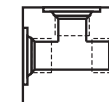
360 different variations in stock and ready to ship same day.



90 DEGREE
PAGES 46-47



180 DEGREE
PAGES 48-49



270 DEGREE
PAGES 50-51

Header Manifolds and Junction Blocks are stocked in

-6061-T6 Aluminum with Black Anodize or 12L14 Steel with Clear Zinc

And

-NPT ports or SAE ports

Custom manifolds can be made in different materials, plating, ports, and sizes. Please consult your sales rep for pricing and leadtime.

Custom Materials: Brass, Stainless Steel, Ductile Iron, Plastics

Custom Ports: BSPP, BSPT, METRIC



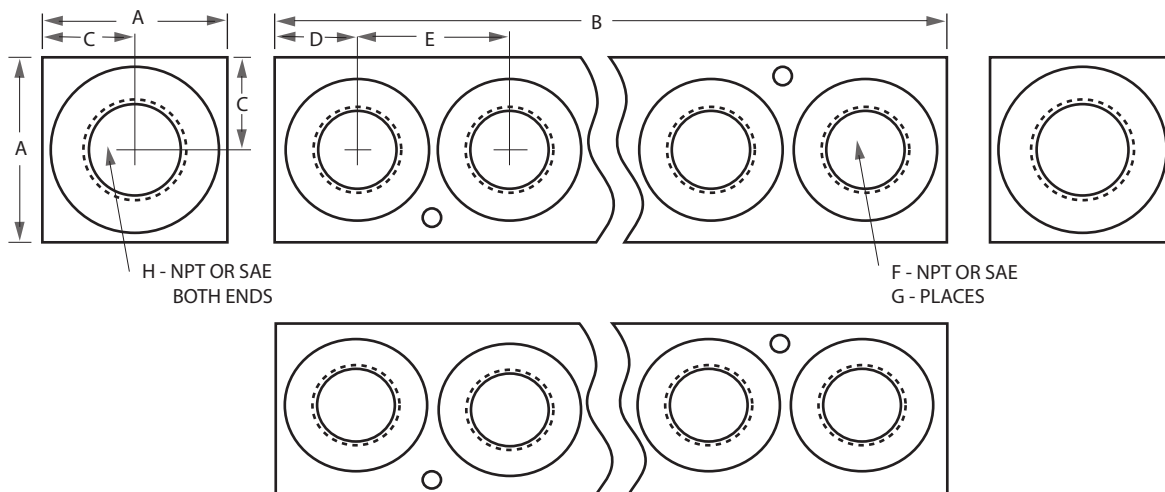
Header Manifold - 0 Degree

NPT

SAE

PART NO.	A	B	C	D	E	F	G	H
H*000-02-1/8	1.00	1.75	0.50	0.50	0.75	1/8	2	1/4
H*000-04-1/8	1.00	3.25	0.50	0.50	0.75	1/8	4	1/4
H*000-06-1/8	1.00	4.75	0.50	0.50	0.75	1/8	6	1/4
H*000-08-1/8	1.00	6.25	0.50	0.50	0.75	1/8	8	1/4
H*000-10-1/8	1.00	7.75	0.50	0.50	0.75	1/8	10	1/4
H*000-02-1/4	1.25	2.38	0.63	0.75	0.88	1/4	2	3/8
H*000-04-1/4	1.25	4.12	0.63	0.75	0.88	1/4	4	3/8
H*000-06-1/4	1.25	5.88	0.63	0.75	0.88	1/4	6	3/8
H*000-08-1/4	1.25	7.62	0.63	0.75	0.88	1/4	8	3/8
H*000-10-1/4	1.25	9.38	0.63	0.75	0.88	1/4	10	3/8
H*000-02-3/8	1.50	2.75	0.75	0.88	1.00	3/8	2	1/2
H*000-04-3/8	1.50	4.75	0.75	0.88	1.00	3/8	4	1/2
H*000-06-3/8	1.50	6.75	0.75	0.88	1.00	3/8	6	1/2
H*000-08-3/8	1.50	8.75	0.75	0.88	1.00	3/8	8	1/2
H*000-10-3/8	1.50	10.75	0.75	0.88	1.00	3/8	10	1/2
H*000-02-1/2	2.00	4.00	1.00	1.25	1.50	1/2	2	3/4
H*000-04-1/2	2.00	7.00	1.00	1.25	1.50	1/2	4	3/4
H*000-06-1/2	2.00	10.00	1.00	1.25	1.50	1/2	6	3/4
H*000-08-1/2	2.00	13.00	1.00	1.25	1.50	1/2	8	3/4
H*000-10-1/2	2.00	16.00	1.00	1.25	1.50	1/2	10	3/4
H*000-02-3/4	2.50	5.00	1.25	1.50	2.00	3/4	2	1
H*000-04-3/4	2.50	9.00	1.25	1.50	2.00	3/4	4	1
H*000-06-3/4	2.50	13.00	1.25	1.50	2.00	3/4	6	1
H*000-08-3/4	2.50	17.00	1.25	1.50	2.00	3/4	8	1
H*000-10-3/4	2.50	21.00	1.25	1.50	2.00	3/4	10	1
H*000-02-1	2.75	5.50	1.375	1.50	2.50	1	2	1 1/4
H*000-04-1	2.75	10.50	1.375	1.50	2.50	1	4	1 1/4
H*000-06-1	2.75	15.50	1.375	1.50	2.50	1	6	1 1/4
H*000-08-1	2.75	20.50	1.375	1.50	2.50	1	8	1 1/4
H*000-10-1	2.75	25.50	1.375	1.50	2.50	1	10	1 1/4
H*000-02-2	1.00	1.75	0.50	0.50	0.75	-2	2	-4
H*000-04-2	1.00	3.25	0.50	0.50	0.75	-2	4	-4
H*000-06-2	1.00	4.75	0.50	0.50	0.75	-2	6	-4
H*000-08-2	1.00	6.25	0.50	0.50	0.75	-2	8	-4
H*000-10-2	1.00	7.75	0.50	0.50	0.75	-2	10	-4
H*000-02-4	1.25	2.38	0.63	0.75	0.88	-4	2	-6
H*000-04-4	1.25	4.12	0.63	0.75	0.88	-4	4	-6
H*000-06-4	1.25	5.88	0.63	0.75	0.88	-4	6	-6
H*000-08-4	1.25	7.62	0.63	0.75	0.88	-4	8	-6
H*000-10-4	1.25	9.38	0.63	0.75	0.88	-4	10	-6
H*000-02-6	1.50	2.75	0.75	0.88	1.00	-6	2	-8
H*000-04-6	1.50	4.75	0.75	0.88	1.00	-6	4	-8
H*000-06-6	1.50	6.75	0.75	0.88	1.00	-6	6	-8
H*000-08-6	1.50	8.75	0.75	0.88	1.00	-6	8	-8
H*000-10-6	1.50	10.75	0.75	0.88	1.00	-6	10	-8
H*000-02-8	2.00	4.00	1.00	1.25	1.50	-8	2	-12
H*000-04-8	2.00	7.00	1.00	1.25	1.50	-8	4	-12
H*000-06-8	2.00	10.00	1.00	1.25	1.50	-8	6	-12
H*000-08-8	2.00	13.00	1.00	1.25	1.50	-8	8	-12
H*000-10-8	2.00	16.00	1.00	1.25	1.50	-8	10	-12
H*000-02-12	2.50	5.00	1.25	1.50	2.00	-12	2	-16
H*000-04-12	2.50	9.00	1.25	1.50	2.00	-12	4	-16
H*000-06-12	2.50	13.00	1.25	1.50	2.00	-12	6	-16
H*000-08-12	2.50	17.00	1.25	1.50	2.00	-12	8	-16
H*000-10-12	2.50	21.00	1.25	1.50	2.00	-12	10	-16
H*000-02-16	2.75	5.50	1.375	1.50	2.50	-16	2	-20
H*000-04-16	2.75	10.50	1.375	1.50	2.50	-16	4	-20
H*000-06-16	2.75	15.50	1.375	1.50	2.50	-16	6	-20
H*000-08-16	2.75	20.50	1.375	1.50	2.50	-16	8	-20
H*000-10-16	2.75	25.50	1.375	1.50	2.50	-16	10	-20

Header Manifold - 90 Degree



(SEE PAGE 52 FOR MOUNTING DETAILS)

ORDERING GUIDE

HEADER MANIFOLD = **H** —————

6061-T6 ALUMINUM W/BLACK ANODIZE = **A**-
 12L14 STEEL W/CLEAR ZINC (ROHS) = **S**-

H A 090 - 02 - 1/8

090 = 90°

- 02** = 2 STATION
- 04** = 4 STATION
- 06** = 6 STATION
- 08** = 8 STATION
- 10** = 10 STATION

- 1/8** = 1/8 NPT
- 1/4** = 1/4 NPT
- 3/8** = 3/8 NPT
- 1/2** = 1/2 NPT
- 3/4** = 3/4 NPT
- 1** = 1 NPT
- 2** = -2 SAE
- 4** = -4 SAE
- 6** = -6 SAE
- 8** = -8 SAE
- 12** = -12 SAE
- 16** = -16 SAE



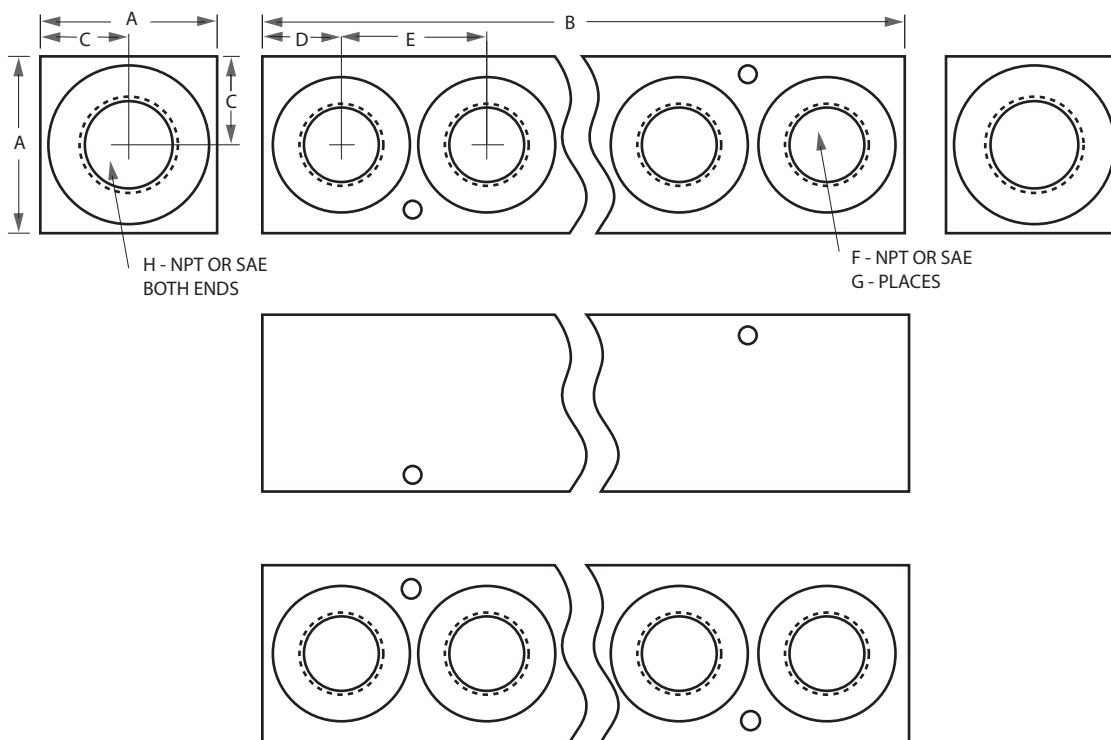
Header Manifold - 90 Degree

NPT

SAE

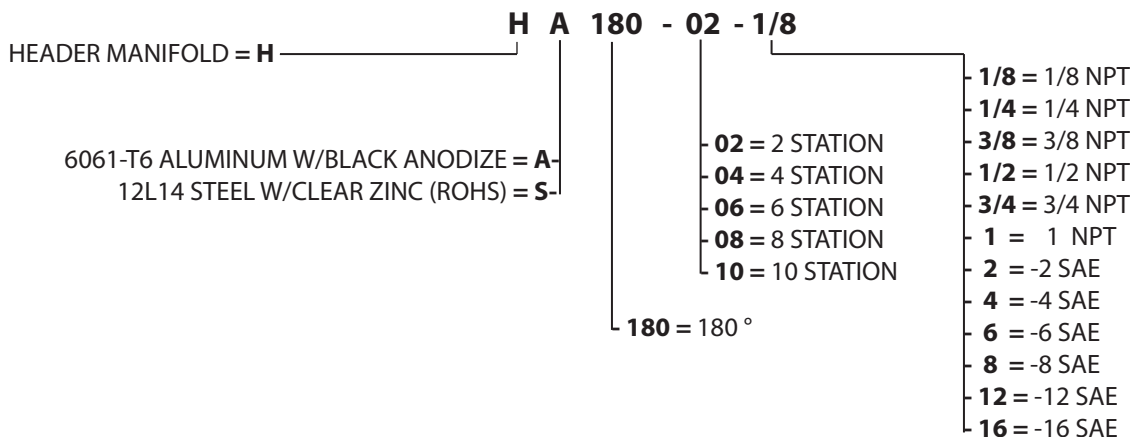
PART NO.	A	B	C	D	E	F	G	H
H*090-02-1/8	1.00	1.75	0.50	0.50	0.75	1/8	4	1/4
H*090-04-1/8	1.00	3.25	0.50	0.50	0.75	1/8	8	1/4
H*090-06-1/8	1.00	4.75	0.50	0.50	0.75	1/8	12	1/4
H*090-08-1/8	1.00	6.25	0.50	0.50	0.75	1/8	16	1/4
H*090-10-1/8	1.00	7.75	0.50	0.50	0.75	1/8	20	1/4
H*090-02-1/4	1.25	2.38	0.63	0.75	0.88	1/4	4	3/8
H*090-04-1/4	1.25	4.12	0.63	0.75	0.88	1/4	8	3/8
H*090-06-1/4	1.25	5.88	0.63	0.75	0.88	1/4	12	3/8
H*090-08-1/4	1.25	7.62	0.63	0.75	0.88	1/4	16	3/8
H*090-10-1/4	1.25	9.38	0.63	0.75	0.88	1/4	20	3/8
H*090-02-3/8	1.50	2.75	0.75	0.88	1.00	3/8	4	1/2
H*090-04-3/8	1.50	4.75	0.75	0.88	1.00	3/8	8	1/2
H*090-06-3/8	1.50	6.75	0.75	0.88	1.00	3/8	12	1/2
H*090-08-3/8	1.50	8.75	0.75	0.88	1.00	3/8	16	1/2
H*090-10-3/8	1.50	10.75	0.75	0.88	1.00	3/8	20	1/2
H*090-02-1/2	2.00	4.00	1.00	1.25	1.50	1/2	4	3/4
H*090-04-1/2	2.00	7.00	1.00	1.25	1.50	1/2	8	3/4
H*090-06-1/2	2.00	10.00	1.00	1.25	1.50	1/2	12	3/4
H*090-08-1/2	2.00	13.00	1.00	1.25	1.50	1/2	16	3/4
H*090-10-1/2	2.00	16.00	1.00	1.25	1.50	1/2	20	3/4
H*090-02-3/4	2.50	5.00	1.25	1.50	2.00	3/4	4	1
H*090-04-3/4	2.50	9.00	1.25	1.50	2.00	3/4	8	1
H*090-06-3/4	2.50	13.00	1.25	1.50	2.00	3/4	12	1
H*090-08-3/4	2.50	17.00	1.25	1.50	2.00	3/4	16	1
H*090-10-3/4	2.50	21.00	1.25	1.50	2.00	3/4	20	1
H*090-02-1	2.75	5.50	1.375	1.50	2.50	1	4	1 1/4
H*090-04-1	2.75	10.50	1.375	1.50	2.50	1	8	1 1/4
H*090-06-1	2.75	15.50	1.375	1.50	2.50	1	12	1 1/4
H*090-08-1	2.75	20.50	1.375	1.50	2.50	1	16	1 1/4
H*090-10-1	2.75	25.50	1.375	1.50	2.50	1	20	1 1/4
H*090-02-2	1.00	1.75	0.50	0.50	0.75	-2	4	-4
H*090-04-2	1.00	3.25	0.50	0.50	0.75	-2	8	-4
H*090-06-2	1.00	4.75	0.50	0.50	0.75	-2	12	-4
H*090-08-2	1.00	6.25	0.50	0.50	0.75	-2	16	-4
H*090-10-2	1.00	7.75	0.50	0.50	0.75	-2	20	-4
H*090-02-4	1.25	2.38	0.63	0.75	0.88	-4	4	-6
H*090-04-4	1.25	4.12	0.63	0.75	0.88	-4	8	-6
H*090-06-4	1.25	5.88	0.63	0.75	0.88	-4	12	-6
H*090-08-4	1.25	7.62	0.63	0.75	0.88	-4	16	-6
H*090-10-4	1.25	9.38	0.63	0.75	0.88	-4	20	-6
H*090-02-6	1.50	2.75	0.75	0.88	1.00	-6	4	-8
H*090-04-6	1.50	4.75	0.75	0.88	1.00	-6	8	-8
H*090-06-6	1.50	6.75	0.75	0.88	1.00	-6	12	-8
H*090-08-6	1.50	8.75	0.75	0.88	1.00	-6	16	-8
H*090-10-6	1.50	10.75	0.75	0.88	1.00	-6	20	-8
H*090-02-8	2.00	4.00	1.00	1.25	1.50	-8	4	-12
H*090-04-8	2.00	7.00	1.00	1.25	1.50	-8	8	-12
H*090-06-8	2.00	10.00	1.00	1.25	1.50	-8	12	-12
H*090-08-8	2.00	13.00	1.00	1.25	1.50	-8	16	-12
H*090-10-8	2.00	16.00	1.00	1.25	1.50	-8	20	-12
H*090-02-12	2.50	5.00	1.25	1.50	2.00	-12	4	-16
H*090-04-12	2.50	9.00	1.25	1.50	2.00	-12	8	-16
H*090-06-12	2.50	13.00	1.25	1.50	2.00	-12	12	-16
H*090-08-12	2.50	17.00	1.25	1.50	2.00	-12	16	-16
H*090-10-12	2.50	21.00	1.25	1.50	2.00	-12	20	-16
H*090-02-16	2.75	5.50	1.375	1.50	2.50	-16	4	-20
H*090-04-16	2.75	10.50	1.375	1.50	2.50	-16	8	-20
H*090-06-16	2.75	15.50	1.375	1.50	2.50	-16	12	-20
H*090-08-16	2.75	20.50	1.375	1.50	2.50	-16	16	-20
H*090-10-16	2.75	25.50	1.375	1.50	2.50	-16	20	-20

Header Manifold - 180 Degree



(SEE PAGE 52 FOR MOUNTING DETAILS)

ORDERING GUIDE





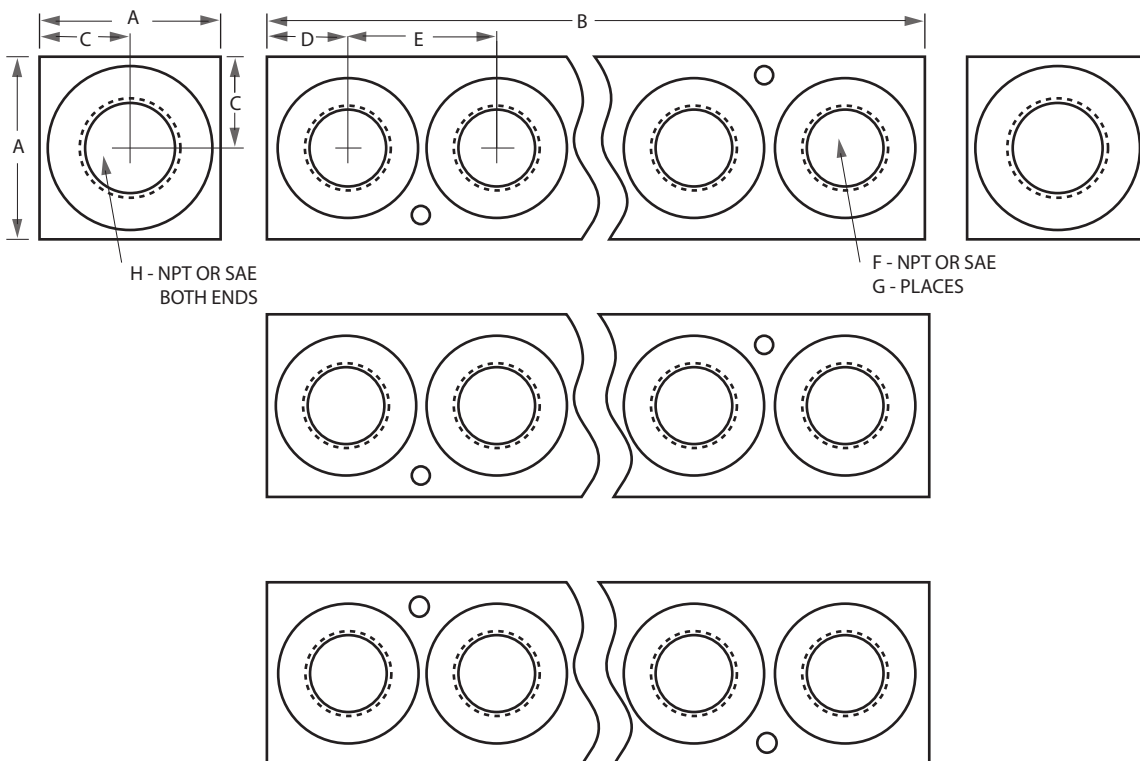
Header Manifold - 180 Degree

NPT

SAE

PART NO.	A	B	C	D	E	F	G	H
H*180-02-1/8	1.00	1.75	0.50	0.50	0.75	1/8	4	1/4
H*180-04-1/8	1.00	3.25	0.50	0.50	0.75	1/8	8	1/4
H*180-06-1/8	1.00	4.75	0.50	0.50	0.75	1/8	12	1/4
H*180-08-1/8	1.00	6.25	0.50	0.50	0.75	1/8	16	1/4
H*180-10-1/8	1.00	7.75	0.50	0.50	0.75	1/8	20	1/4
H*180-02-1/4	1.25	2.38	0.63	0.75	0.88	1/4	4	3/8
H*180-04-1/4	1.25	4.12	0.63	0.75	0.88	1/4	8	3/8
H*180-06-1/4	1.25	5.88	0.63	0.75	0.88	1/4	12	3/8
H*180-08-1/4	1.25	7.62	0.63	0.75	0.88	1/4	16	3/8
H*180-10-1/4	1.25	9.38	0.63	0.75	0.88	1/4	20	3/8
H*180-02-3/8	1.50	2.75	0.75	0.88	1.00	3/8	4	1/2
H*180-04-3/8	1.50	4.75	0.75	0.88	1.00	3/8	8	1/2
H*180-06-3/8	1.50	6.75	0.75	0.88	1.00	3/8	12	1/2
H*180-08-3/8	1.50	8.75	0.75	0.88	1.00	3/8	16	1/2
H*180-10-3/8	1.50	10.75	0.75	0.88	1.00	3/8	20	1/2
H*180-02-1/2	2.00	4.00	1.00	1.25	1.50	1/2	4	3/4
H*180-04-1/2	2.00	7.00	1.00	1.25	1.50	1/2	8	3/4
H*180-06-1/2	2.00	10.00	1.00	1.25	1.50	1/2	12	3/4
H*180-08-1/2	2.00	13.00	1.00	1.25	1.50	1/2	16	3/4
H*180-10-1/2	2.00	16.00	1.00	1.25	1.50	1/2	20	3/4
H*180-02-3/4	2.50	5.00	1.25	1.50	2.00	3/4	4	1
H*180-04-3/4	2.50	9.00	1.25	1.50	2.00	3/4	8	1
H*180-06-3/4	2.50	13.00	1.25	1.50	2.00	3/4	12	1
H*180-08-3/4	2.50	17.00	1.25	1.50	2.00	3/4	16	1
H*180-10-3/4	2.50	21.00	1.25	1.50	2.00	3/4	20	1
H*180-02-1	2.75	5.50	1.375	1.50	2.50	1	4	1 1/4
H*180-04-1	2.75	10.50	1.375	1.50	2.50	1	8	1 1/4
H*180-06-1	2.75	15.50	1.375	1.50	2.50	1	12	1 1/4
H*180-08-1	2.75	20.50	1.375	1.50	2.50	1	16	1 1/4
H*180-10-1	2.75	25.50	1.375	1.50	2.50	1	20	1 1/4
H*180-02-2	1.00	1.75	0.50	0.50	0.75	-2	4	-4
H*180-04-2	1.00	3.25	0.50	0.50	0.75	-2	8	-4
H*180-06-2	1.00	4.75	0.50	0.50	0.75	-2	12	-4
H*180-08-2	1.00	6.25	0.50	0.50	0.75	-2	16	-4
H*180-10-2	1.00	7.75	0.50	0.50	0.75	-2	20	-4
H*180-02-4	1.25	2.38	0.63	0.75	0.88	-4	4	-6
H*180-04-4	1.25	4.12	0.63	0.75	0.88	-4	8	-6
H*180-06-4	1.25	5.88	0.63	0.75	0.88	-4	12	-6
H*180-08-4	1.25	7.62	0.63	0.75	0.88	-4	16	-6
H*180-10-4	1.25	9.38	0.63	0.75	0.88	-4	20	-6
H*180-02-6	1.50	2.75	0.75	0.88	1.00	-6	4	-8
H*180-04-6	1.50	4.75	0.75	0.88	1.00	-6	8	-8
H*180-06-6	1.50	6.75	0.75	0.88	1.00	-6	12	-8
H*180-08-6	1.50	8.75	0.75	0.88	1.00	-6	16	-8
H*180-10-6	1.50	10.75	0.75	0.88	1.00	-6	20	-8
H*180-02-8	2.00	4.00	1.00	1.25	1.50	-8	4	-12
H*180-04-8	2.00	7.00	1.00	1.25	1.50	-8	8	-12
H*180-06-8	2.00	10.00	1.00	1.25	1.50	-8	12	-12
H*180-08-8	2.00	13.00	1.00	1.25	1.50	-8	16	-12
H*180-10-8	2.00	16.00	1.00	1.25	1.50	-8	20	-12
H*180-02-12	2.50	5.00	1.25	1.50	2.00	-12	4	-16
H*180-04-12	2.50	9.00	1.25	1.50	2.00	-12	8	-16
H*180-06-12	2.50	13.00	1.25	1.50	2.00	-12	12	-16
H*180-08-12	2.50	17.00	1.25	1.50	2.00	-12	16	-16
H*180-10-12	2.50	21.00	1.25	1.50	2.00	-12	20	-16
H*180-02-16	2.75	5.50	1.375	1.50	2.50	-16	4	-20
H*180-04-16	2.75	10.50	1.375	1.50	2.50	-16	8	-20
H*180-06-16	2.75	15.50	1.375	1.50	2.50	-16	12	-20
H*180-08-16	2.75	20.50	1.375	1.50	2.50	-16	16	-20
H*180-10-16	2.75	25.50	1.375	1.50	2.50	-16	20	-20

Header Manifold - 270 Degree



(SEE PAGE 52 FOR MOUNTING DETAILS)

ORDERING GUIDE

HEADER MANIFOLD = **H** _____

6061-T6 ALUMINUM W/BLACK ANODIZE = **A**-
12L14 STEEL W/CLEAR ZINC (ROHS) = **S**-

H A 270 - 02 - 1/8

270 = 270 °

- 02** = 2 STATION
- 04** = 4 STATION
- 06** = 6 STATION
- 08** = 8 STATION
- 10** = 10 STATION

- 1/8** = 1/8 NPT
- 1/4** = 1/4 NPT
- 3/8** = 3/8 NPT
- 1/2** = 1/2 NPT
- 3/4** = 3/4 NPT
- 1** = 1 NPT
- 2** = -2 SAE
- 4** = -4 SAE
- 6** = -6 SAE
- 8** = -8 SAE
- 12** = -12 SAE
- 16** = -16 SAE



Header Manifold - 270 Degree

NPT

SAE

PART NO.	A	B	C	D	E	F	G	H
H*270-02-1/8	1.00	1.75	0.50	0.50	0.75	1/8	6	1/4
H*270-04-1/8	1.00	3.25	0.50	0.50	0.75	1/8	12	1/4
H*270-06-1/8	1.00	4.75	0.50	0.50	0.75	1/8	18	1/4
H*270-08-1/8	1.00	6.25	0.50	0.50	0.75	1/8	24	1/4
H*270-10-1/8	1.00	7.75	0.50	0.50	0.75	1/8	30	1/4
H*270-02-1/4	1.25	2.38	0.63	0.75	0.88	1/4	6	3/8
H*270-04-1/4	1.25	4.12	0.63	0.75	0.88	1/4	12	3/8
H*270-06-1/4	1.25	5.88	0.63	0.75	0.88	1/4	18	3/8
H*270-08-1/4	1.25	7.62	0.63	0.75	0.88	1/4	24	3/8
H*270-10-1/4	1.25	9.38	0.63	0.75	0.88	1/4	30	3/8
H*270-02-3/8	1.50	2.75	0.75	0.88	1.00	3/8	6	1/2
H*270-04-3/8	1.50	4.75	0.75	0.88	1.00	3/8	12	1/2
H*270-06-3/8	1.50	6.75	0.75	0.88	1.00	3/8	18	1/2
H*270-08-3/8	1.50	8.75	0.75	0.88	1.00	3/8	24	1/2
H*270-10-3/8	1.50	10.75	0.75	0.88	1.00	3/8	30	1/2
H*270-02-1/2	2.00	4.00	1.00	1.25	1.50	1/2	6	3/4
H*270-04-1/2	2.00	7.00	1.00	1.25	1.50	1/2	12	3/4
H*270-06-1/2	2.00	10.00	1.00	1.25	1.50	1/2	18	3/4
H*270-08-1/2	2.00	13.00	1.00	1.25	1.50	1/2	24	3/4
H*270-10-1/2	2.00	16.00	1.00	1.25	1.50	1/2	30	3/4
H*270-02-3/4	2.50	5.00	1.25	1.50	2.00	3/4	6	1
H*270-04-3/4	2.50	9.00	1.25	1.50	2.00	3/4	12	1
H*270-06-3/4	2.50	13.00	1.25	1.50	2.00	3/4	18	1
H*270-08-3/4	2.50	17.00	1.25	1.50	2.00	3/4	24	1
H*270-10-3/4	2.50	21.00	1.25	1.50	2.00	3/4	30	1
H*270-02-1	2.75	5.50	1.375	1.50	2.50	1	6	1 1/4
H*270-04-1	2.75	10.50	1.375	1.50	2.50	1	12	1 1/4
H*270-06-1	2.75	15.50	1.375	1.50	2.50	1	18	1 1/4
H*270-08-1	2.75	20.50	1.375	1.50	2.50	1	24	1 1/4
H*270-10-1	2.75	25.50	1.375	1.50	2.50	1	30	1 1/4
H*270-02-2	1.00	1.75	0.50	0.50	0.75	-2	6	-4
H*270-04-2	1.00	3.25	0.50	0.50	0.75	-2	12	-4
H*270-06-2	1.00	4.75	0.50	0.50	0.75	-2	18	-4
H*270-08-2	1.00	6.25	0.50	0.50	0.75	-2	24	-4
H*270-10-2	1.00	7.75	0.50	0.50	0.75	-2	30	-4
H*270-02-4	1.25	2.38	0.63	0.75	0.88	-4	6	-6
H*270-04-4	1.25	4.12	0.63	0.75	0.88	-4	12	-6
H*270-06-4	1.25	5.88	0.63	0.75	0.88	-4	18	-6
H*270-08-4	1.25	7.62	0.63	0.75	0.88	-4	24	-6
H*270-10-4	1.25	9.38	0.63	0.75	0.88	-4	30	-6
H*270-02-6	1.50	2.75	0.75	0.88	1.00	-6	6	-8
H*270-04-6	1.50	4.75	0.75	0.88	1.00	-6	12	-8
H*270-06-6	1.50	6.75	0.75	0.88	1.00	-6	18	-8
H*270-08-6	1.50	8.75	0.75	0.88	1.00	-6	24	-8
H*270-10-6	1.50	10.75	0.75	0.88	1.00	-6	30	-8
H*270-02-8	2.00	4.00	1.00	1.25	1.50	-8	6	-12
H*270-04-8	2.00	7.00	1.00	1.25	1.50	-8	12	-12
H*270-06-8	2.00	10.00	1.00	1.25	1.50	-8	18	-12
H*270-08-8	2.00	13.00	1.00	1.25	1.50	-8	24	-12
H*270-10-8	2.00	16.00	1.00	1.25	1.50	-8	30	-12
H*270-02-12	2.50	5.00	1.25	1.50	2.00	-12	6	-16
H*270-04-12	2.50	9.00	1.25	1.50	2.00	-12	12	-16
H*270-06-12	2.50	13.00	1.25	1.50	2.00	-12	18	-16
H*270-08-12	2.50	17.00	1.25	1.50	2.00	-12	24	-16
H*270-10-12	2.50	21.00	1.25	1.50	2.00	-12	30	-16
H*270-02-16	2.75	5.50	1.375	1.50	2.50	-16	6	-20
H*270-04-16	2.75	10.50	1.375	1.50	2.50	-16	12	-20
H*270-06-16	2.75	15.50	1.375	1.50	2.50	-16	18	-20
H*270-08-16	2.75	20.50	1.375	1.50	2.50	-16	24	-20
H*270-10-16	2.75	25.50	1.375	1.50	2.50	-16	30	-20

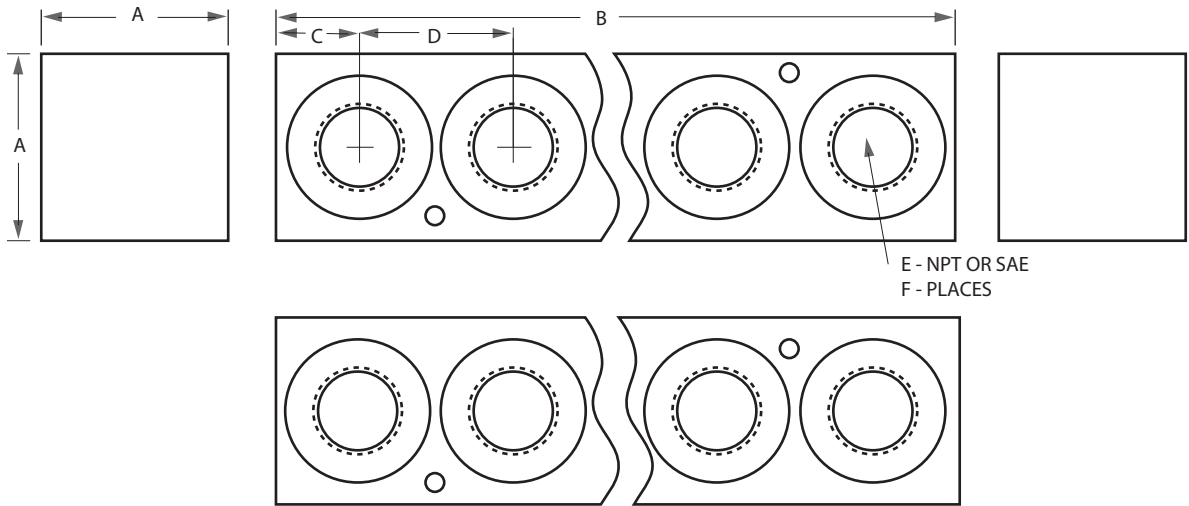


Datum-A-Industries, Inc.

Since 1981

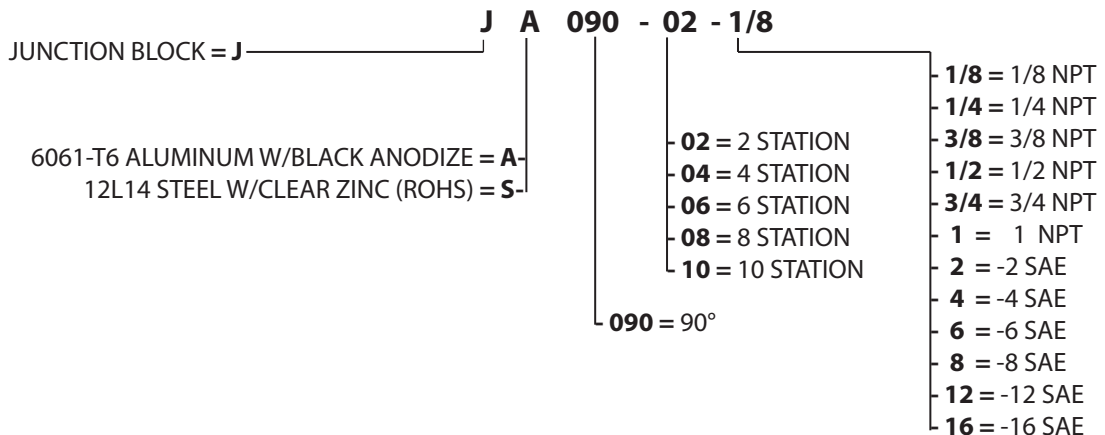
Catalog 2010

Junction Block - 90 Degree



(SEE PAGE 52 FOR MOUNTING DETAILS)

ORDERING GUIDE





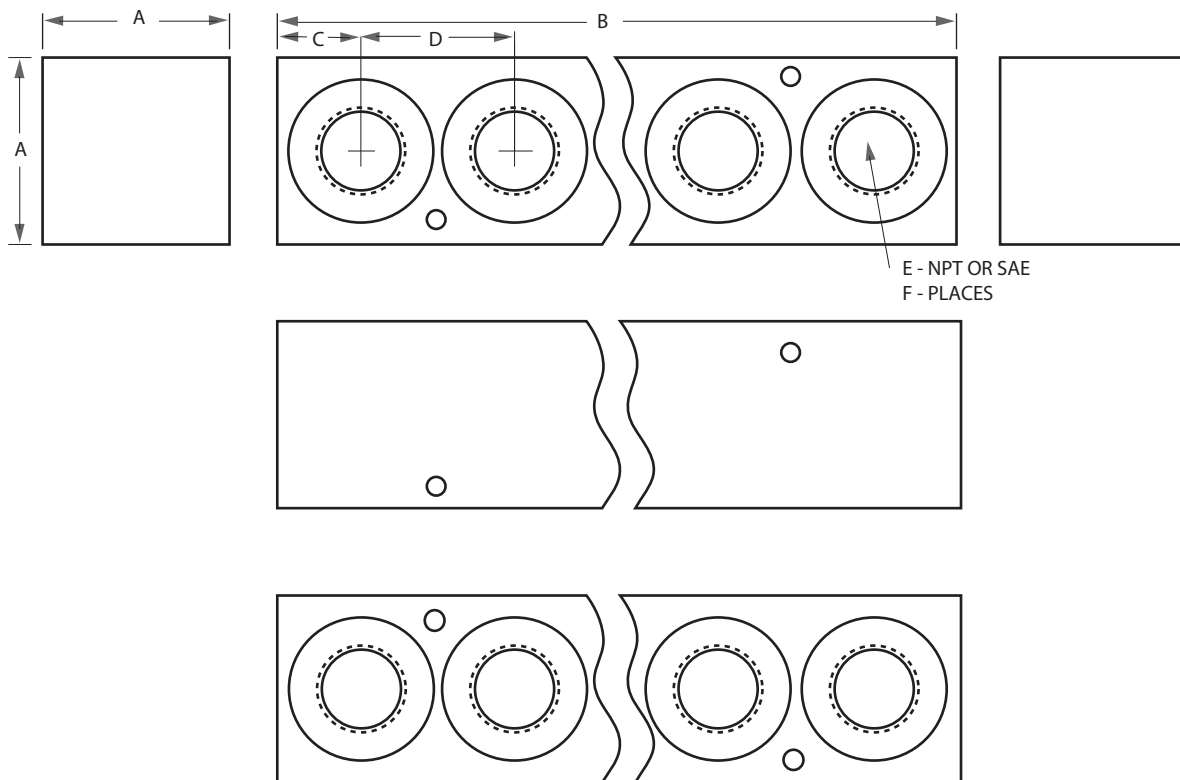
Junction Block - 90 Degree

NPT

SAE

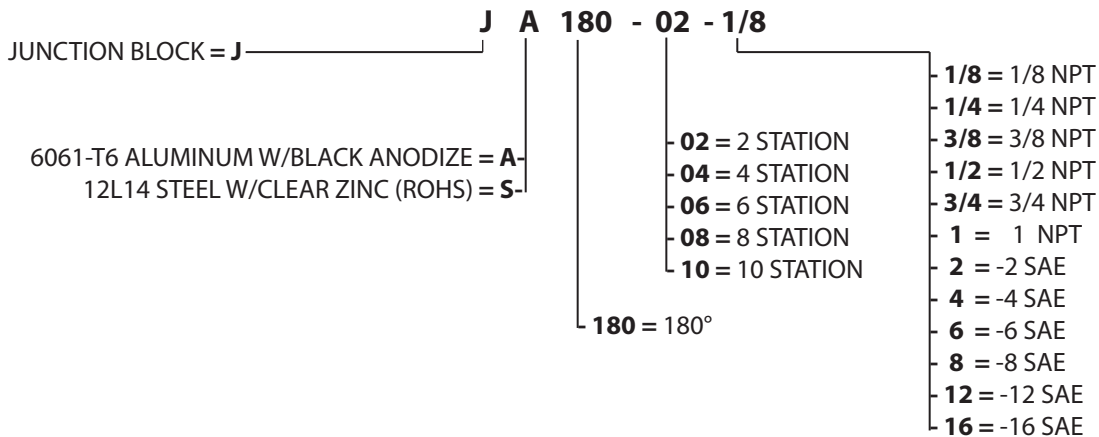
PART NO.	A	B	C	D	E	F
J*090-02-1/8	1.00	1.75	0.50	0.75	1/8	4
J*090-04-1/8	1.00	3.25	0.50	0.75	1/8	8
J*090-06-1/8	1.00	4.75	0.50	0.75	1/8	12
J*090-08-1/8	1.00	6.25	0.50	0.75	1/8	16
J*090-10-1/8	1.00	7.75	0.50	0.75	1/8	20
J*090-02-1/4	1.25	2.38	0.75	0.88	1/4	4
J*090-04-1/4	1.25	4.12	0.75	0.88	1/4	8
J*090-06-1/4	1.25	5.88	0.75	0.88	1/4	12
J*090-08-1/4	1.25	7.62	0.75	0.88	1/4	16
J*090-10-1/4	1.25	9.38	0.75	0.88	1/4	20
J*090-02-3/8	1.50	2.75	0.88	1.00	3/8	4
J*090-04-3/8	1.50	4.75	0.88	1.00	3/8	8
J*090-06-3/8	1.50	6.75	0.88	1.00	3/8	12
J*090-08-3/8	1.50	8.75	0.88	1.00	3/8	16
J*090-10-3/8	1.50	10.75	0.88	1.00	3/8	20
J*090-02-1/2	2.00	4.00	1.25	1.50	1/2	4
J*090-04-1/2	2.00	7.00	1.25	1.50	1/2	8
J*090-06-1/2	2.00	10.00	1.25	1.50	1/2	12
J*090-08-1/2	2.00	13.00	1.25	1.50	1/2	16
J*090-10-1/2	2.00	16.00	1.25	1.50	1/2	20
J*090-02-3/4	2.50	5.00	1.50	2.00	3/4	4
J*090-04-3/4	2.50	9.00	1.50	2.00	3/4	8
J*090-06-3/4	2.50	13.00	1.50	2.00	3/4	12
J*090-08-3/4	2.50	17.00	1.50	2.00	3/4	16
J*090-10-3/4	2.50	21.00	1.50	2.00	3/4	20
J*090-02-1	2.75	5.50	1.50	2.50	1	4
J*090-04-1	2.75	10.50	1.50	2.50	1	8
J*090-06-1	2.75	15.50	1.50	2.50	1	12
J*090-08-1	2.75	20.50	1.50	2.50	1	16
J*090-10-1	2.75	25.50	1.50	2.50	1	20
J*090-02-2	1.00	1.75	0.50	0.75	-2	4
J*090-04-2	1.00	3.25	0.50	0.75	-2	8
J*090-06-2	1.00	4.75	0.50	0.75	-2	12
J*090-08-2	1.00	6.25	0.50	0.75	-2	16
J*090-10-2	1.00	7.75	0.50	0.75	-2	20
J*090-02-4	1.25	2.38	0.75	0.88	-4	4
J*090-04-4	1.25	4.12	0.75	0.88	-4	8
J*090-06-4	1.25	5.88	0.75	0.88	-4	12
J*090-08-4	1.25	7.62	0.75	0.88	-4	16
J*090-10-4	1.25	9.38	0.75	0.88	-4	20
J*090-02-6	1.50	2.75	0.88	1.00	-6	4
J*090-04-6	1.50	4.75	0.88	1.00	-6	8
J*090-06-6	1.50	6.75	0.88	1.00	-6	12
J*090-08-6	1.50	8.75	0.88	1.00	-6	16
J*090-10-6	1.50	10.75	0.88	1.00	-6	20
J*090-02-8	2.00	4.00	1.25	1.50	-8	4
J*090-04-8	2.00	7.00	1.25	1.50	-8	8
J*090-06-8	2.00	10.00	1.25	1.50	-8	12
J*090-08-8	2.00	13.00	1.25	1.50	-8	16
J*090-10-8	2.00	16.00	1.25	1.50	-8	20
J*090-02-12	2.50	5.00	1.50	2.00	-12	4
J*090-04-12	2.50	9.00	1.50	2.00	-12	8
J*090-06-12	2.50	13.00	1.50	2.00	-12	12
J*090-08-12	2.50	17.00	1.50	2.00	-12	16
J*090-10-12	2.50	21.00	1.50	2.00	-12	20
J*090-02-16	2.75	5.50	1.50	2.50	-16	4
J*090-04-16	2.75	10.50	1.50	2.50	-16	8
J*090-06-16	2.75	15.50	1.50	2.50	-16	12
J*090-08-16	2.75	20.50	1.50	2.50	-16	16
J*090-10-16	2.75	25.50	1.50	2.50	-16	20

Junction Block - 180 Degree



(SEE PAGE 52 FOR MOUNTING DETAILS)

ORDERING GUIDE





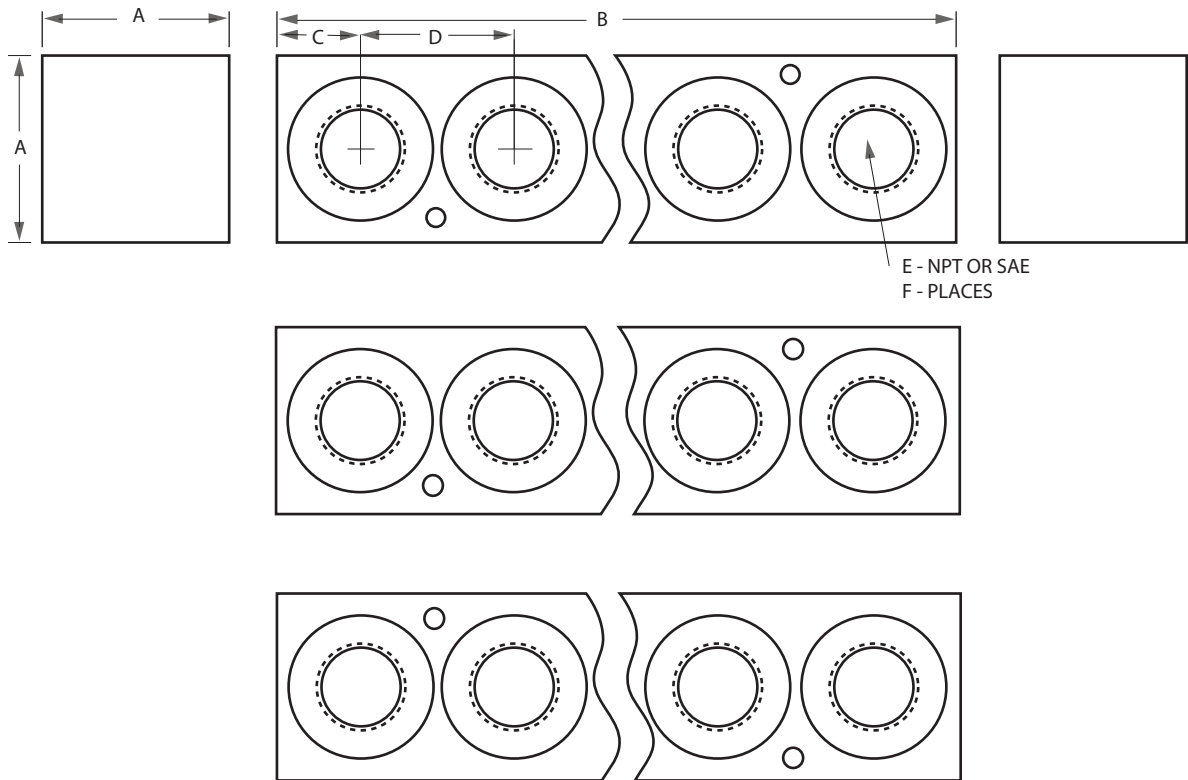
Junction Block - 180 Degree

NPT

SAE

PART NO.	A	B	C	D	E	F
J*180-02-1/8	1.00	1.75	0.50	0.75	1/8	4
J*180-04-1/8	1.00	3.25	0.50	0.75	1/8	8
J*180-06-1/8	1.00	4.75	0.50	0.75	1/8	12
J*180-08-1/8	1.00	6.25	0.50	0.75	1/8	16
J*180-10-1/8	1.00	7.75	0.50	0.75	1/8	20
J*180-02-1/4	1.25	2.38	0.75	0.88	1/4	4
J*180-04-1/4	1.25	4.12	0.75	0.88	1/4	8
J*180-06-1/4	1.25	5.88	0.75	0.88	1/4	12
J*180-08-1/4	1.25	7.62	0.75	0.88	1/4	16
J*180-10-1/4	1.25	9.38	0.75	0.88	1/4	20
J*180-02-3/8	1.50	2.75	0.88	1.00	3/8	4
J*180-04-3/8	1.50	4.75	0.88	1.00	3/8	8
J*180-06-3/8	1.50	6.75	0.88	1.00	3/8	12
J*180-08-3/8	1.50	8.75	0.88	1.00	3/8	16
J*180-10-3/8	1.50	10.75	0.88	1.00	3/8	20
J*180-02-1/2	2.00	4.00	1.25	1.50	1/2	4
J*180-04-1/2	2.00	7.00	1.25	1.50	1/2	8
J*180-06-1/2	2.00	10.00	1.25	1.50	1/2	12
J*180-08-1/2	2.00	13.00	1.25	1.50	1/2	16
J*180-10-1/2	2.00	16.00	1.25	1.50	1/2	20
J*180-02-3/4	2.50	5.00	1.50	2.00	3/4	4
J*180-04-3/4	2.50	9.00	1.50	2.00	3/4	8
J*180-06-3/4	2.50	13.00	1.50	2.00	3/4	12
J*180-08-3/4	2.50	17.00	1.50	2.00	3/4	16
J*180-10-3/4	2.50	21.00	1.50	2.00	3/4	20
J*180-02-1	2.75	5.50	1.50	2.50	1	4
J*180-04-1	2.75	10.50	1.50	2.50	1	8
J*180-06-1	2.75	15.50	1.50	2.50	1	12
J*180-08-1	2.75	20.50	1.50	2.50	1	16
J*180-10-1	2.75	25.50	1.50	2.50	1	20
J*180-02-2	1.00	1.75	0.50	0.75	-2	4
J*180-04-2	1.00	3.25	0.50	0.75	-2	8
J*180-06-2	1.00	4.75	0.50	0.75	-2	12
J*180-08-2	1.00	6.25	0.50	0.75	-2	16
J*180-10-2	1.00	7.75	0.50	0.75	-2	20
J*180-02-4	1.25	2.38	0.75	0.88	-4	4
J*180-04-4	1.25	4.12	0.75	0.88	-4	8
J*180-06-4	1.25	5.88	0.75	0.88	-4	12
J*180-08-4	1.25	7.62	0.75	0.88	-4	16
J*180-10-4	1.25	9.38	0.75	0.88	-4	20
J*180-02-6	1.50	2.75	0.88	1.00	-6	4
J*180-04-6	1.50	4.75	0.88	1.00	-6	8
J*180-06-6	1.50	6.75	0.88	1.00	-6	12
J*180-08-6	1.50	8.75	0.88	1.00	-6	16
J*180-10-6	1.50	10.75	0.88	1.00	-6	20
J*180-02-8	2.00	4.00	1.25	1.50	-8	4
J*180-04-8	2.00	7.00	1.25	1.50	-8	8
J*180-06-8	2.00	10.00	1.25	1.50	-8	12
J*180-08-8	2.00	13.00	1.25	1.50	-8	16
J*180-10-8	2.00	16.00	1.25	1.50	-8	20
J*180-02-12	2.50	5.00	1.50	2.00	-12	4
J*180-04-12	2.50	9.00	1.50	2.00	-12	8
J*180-06-12	2.50	13.00	1.50	2.00	-12	12
J*180-08-12	2.50	17.00	1.50	2.00	-12	16
J*180-10-12	2.50	21.00	1.50	2.00	-12	20
J*180-02-16	2.75	5.50	1.50	2.50	-16	4
J*180-04-16	2.75	10.50	1.50	2.50	-16	8
J*180-06-16	2.75	15.50	1.50	2.50	-16	12
J*180-08-16	2.75	20.50	1.50	2.50	-16	16
J*180-10-16	2.75	25.50	1.50	2.50	-16	20

Junction Block - 270 Degree



(SEE PAGE 52 FOR MOUNTING DETAILS)

ORDERING GUIDE

JUNCTION BLOCK = **J** ———— **J** **A** **270** - **02** - **1/8**

6061-T6 ALUMINUM W/BLACK ANODIZE = **A**-
12L14 STEEL W/CLEAR ZINC (ROHS) = **S**-

02 = 2 STATION
04 = 4 STATION
06 = 6 STATION
08 = 8 STATION
10 = 10 STATION

270 = 270°

1/8 = 1/8 NPT
1/4 = 1/4 NPT
3/8 = 3/8 NPT
1/2 = 1/2 NPT
3/4 = 3/4 NPT
1 = 1 NPT
2 = -2 SAE
4 = -4 SAE
6 = -6 SAE
8 = -8 SAE
12 = -12 SAE
16 = -16 SAE



Junction Block - 270 Degree

NPT

SAE

PART NO.	A	B	C	D	E	F
J*270-02-1/8	1.00	1.75	0.50	0.75	1/8	6
J*270-04-1/8	1.00	3.25	0.50	0.75	1/8	12
J*270-06-1/8	1.00	4.75	0.50	0.75	1/8	18
J*270-08-1/8	1.00	6.25	0.50	0.75	1/8	24
J*270-10-1/8	1.00	7.75	0.50	0.75	1/8	30
J*270-02-1/4	1.25	2.38	0.75	0.88	1/4	6
J*270-04-1/4	1.25	4.12	0.75	0.88	1/4	12
J*270-06-1/4	1.25	5.88	0.75	0.88	1/4	18
J*270-08-1/4	1.25	7.62	0.75	0.88	1/4	24
J*270-10-1/4	1.25	9.38	0.75	0.88	1/4	30
J*270-02-3/8	1.50	2.75	0.88	1.00	3/8	6
J*270-04-3/8	1.50	4.75	0.88	1.00	3/8	12
J*270-06-3/8	1.50	6.75	0.88	1.00	3/8	18
J*270-08-3/8	1.50	8.75	0.88	1.00	3/8	24
J*270-10-3/8	1.50	10.75	0.88	1.00	3/8	30
J*270-02-1/2	2.00	4.00	1.25	1.50	1/2	6
J*270-04-1/2	2.00	7.00	1.25	1.50	1/2	12
J*270-06-1/2	2.00	10.00	1.25	1.50	1/2	18
J*270-08-1/2	2.00	13.00	1.25	1.50	1/2	24
J*270-10-1/2	2.00	16.00	1.25	1.50	1/2	30
J*270-02-3/4	2.50	5.00	1.50	2.00	3/4	6
J*270-04-3/4	2.50	9.00	1.50	2.00	3/4	12
J*270-06-3/4	2.50	13.00	1.50	2.00	3/4	18
J*270-08-3/4	2.50	17.00	1.50	2.00	3/4	24
J*270-10-3/4	2.50	21.00	1.50	2.00	3/4	30
J*270-02-1	2.75	5.50	1.50	2.50	1	6
J*270-04-1	2.75	10.50	1.50	2.50	1	12
J*270-06-1	2.75	15.50	1.50	2.50	1	18
J*270-08-1	2.75	20.50	1.50	2.50	1	24
J*270-10-1	2.75	25.50	1.50	2.50	1	30
J*270-02-2	1.00	1.75	0.50	0.75	-2	6
J*270-04-2	1.00	3.25	0.50	0.75	-2	12
J*270-06-2	1.00	4.75	0.50	0.75	-2	18
J*270-08-2	1.00	6.25	0.50	0.75	-2	24
J*270-10-2	1.00	7.75	0.50	0.75	-2	30
J*270-02-4	1.25	2.38	0.75	0.88	-4	6
J*270-04-4	1.25	4.12	0.75	0.88	-4	12
J*270-06-4	1.25	5.88	0.75	0.88	-4	18
J*270-08-4	1.25	7.62	0.75	0.88	-4	24
J*270-10-4	1.25	9.38	0.75	0.88	-4	30
J*270-02-6	1.50	2.75	0.88	1.00	-6	6
J*270-04-6	1.50	4.75	0.88	1.00	-6	12
J*270-06-6	1.50	6.75	0.88	1.00	-6	18
J*270-08-6	1.50	8.75	0.88	1.00	-6	24
J*270-10-6	1.50	10.75	0.88	1.00	-6	30
J*270-02-8	2.00	4.00	1.25	1.50	-8	6
J*270-04-8	2.00	7.00	1.25	1.50	-8	12
J*270-06-8	2.00	10.00	1.25	1.50	-8	18
J*270-08-8	2.00	13.00	1.25	1.50	-8	24
J*270-10-8	2.00	16.00	1.25	1.50	-8	30
J*270-02-12	2.50	5.00	1.50	2.00	-12	6
J*270-04-12	2.50	9.00	1.50	2.00	-12	12
J*270-06-12	2.50	13.00	1.50	2.00	-12	18
J*270-08-12	2.50	17.00	1.50	2.00	-12	24
J*270-10-12	2.50	21.00	1.50	2.00	-12	30
J*270-02-16	2.75	5.50	1.50	2.50	-16	6
J*270-04-16	2.75	10.50	1.50	2.50	-16	12
J*270-06-16	2.75	15.50	1.50	2.50	-16	18
J*270-08-16	2.75	20.50	1.50	2.50	-16	24
J*270-10-16	2.75	25.50	1.50	2.50	-16	30

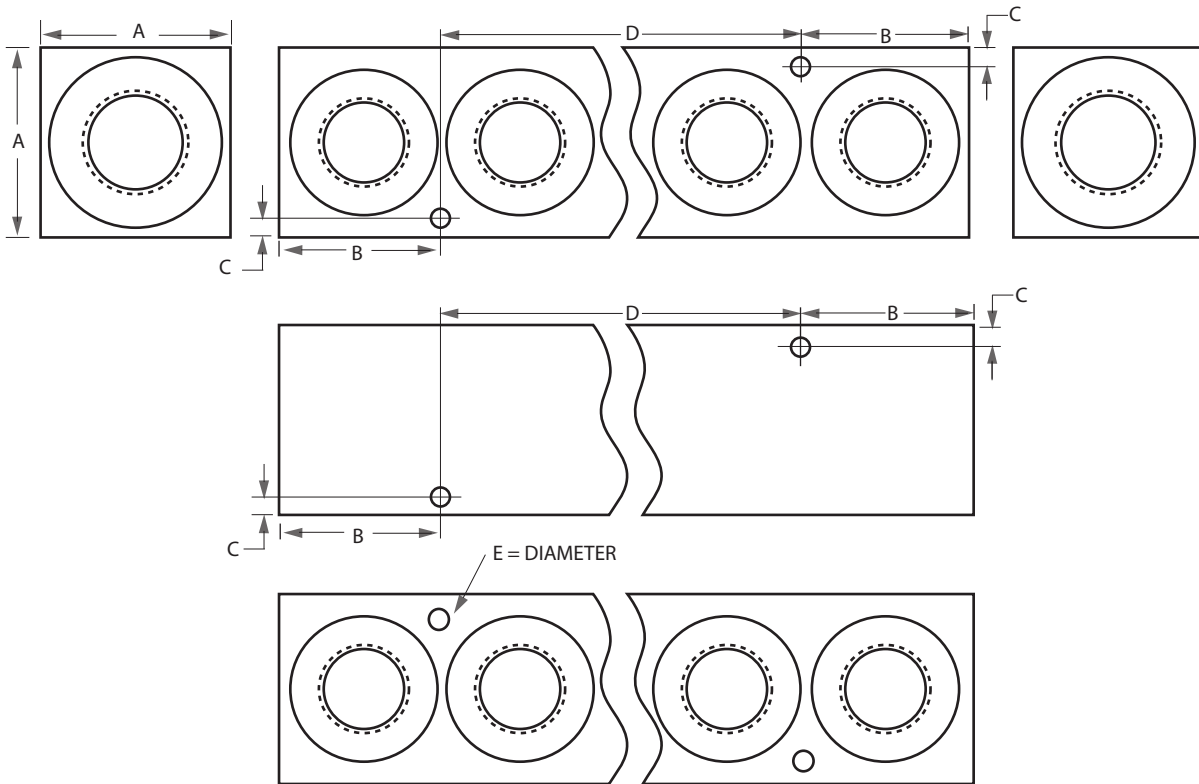


Datum-A-Industries, Inc.

Since 1981

Catalog 2010

Mounting Hole Dimensions



A	B	C	D - 2 STA	D - 4 STA	D - 6 STA	D - 8 STA	D - 10 STA	E
1.00	0.875	0.15	0.00	1.50	3.00	4.50	6.00	0.172
1.25	1.188	0.15	0.00	1.75	3.50	5.25	7.00	0.203
1.50	1.375	0.19	0.00	2.00	4.00	6.00	8.00	0.203
2.00	2.00	0.25	0.00	3.00	6.00	9.00	12.00	0.281
2.50	2.50	0.25	0.00	4.00	8.00	12.00	16.00	0.406
2.75	2.75	0.375	0.00	5.00	10.00	15.00	20.00	0.406

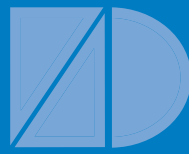


ORIFICE DISC, PLATES AND PLUGS



ORIFICE AVAILABILITY CHART

.0200	.0390	.0760	.1110	.1590	.2050
.0210	.0400	.0785	.1130	.1610	.2090
.0225	.0410	.0810	.1160	.1660	.2130
.0240	.0420	.0820	.1200	.1695	.2190
.0250	.0430	.0860	.1250	.1719	.2210
.0260	.0465	.0890	.1285	.1730	.2280
.0280	.0490	.0935	.1360	.1770	.2340
.0292	.0520	.0960	.1405	.1800	.2380
.0310	.0550	.0980	.1440	.1820	.2420
.0320	.0595	.0995	.1470	.1850	.2500
.0330	.0625	.1015	.1495	.1875	.0000 = BLANK
.0350	.0635	.1040	.1520	.1890	
.0360	.0670	.1065	.1540	.1910	
.0370	.0700	.1093	.1562	.1960	
.0380	.0730	.1100	.1570	.2010	



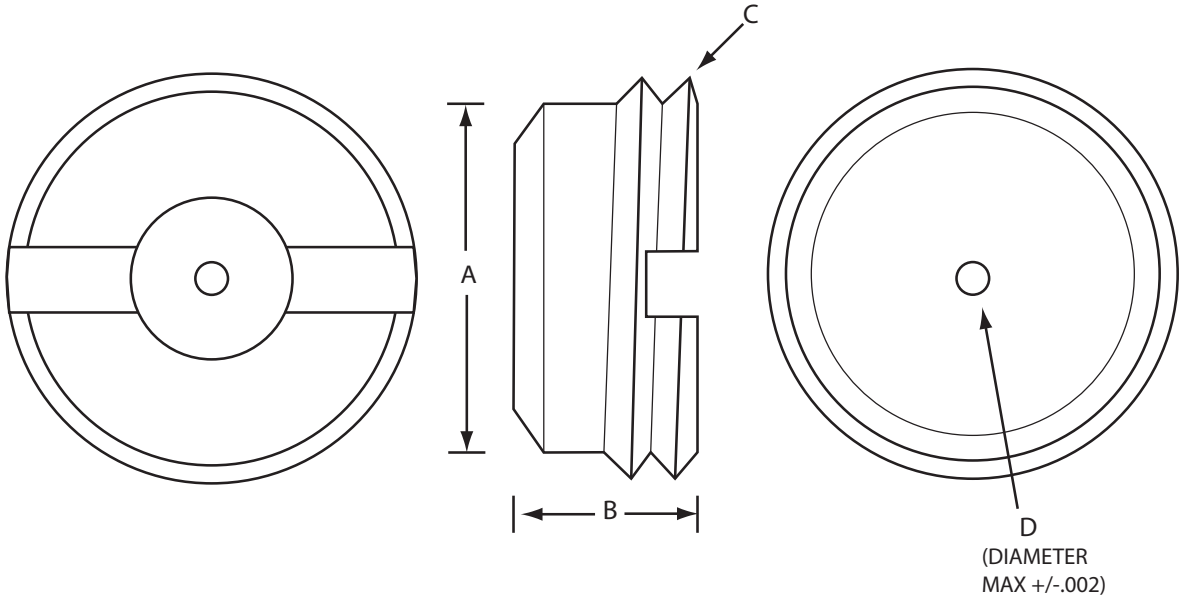
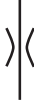
Datum-A-Industries, Inc.

Since 1981

Catalog 2010

TWO-WAY ORIFICE DISC

- BRASS WITH STRAIGHT THREADS
- CONTROLS FLOW IN BOTH DIRECTIONS



PART #	PORT THREAD SIZE	PORT TUBE SIZE	A	B	C	D
DA2004-XXXX	7/16-20 SAE	1/4 (-4 SAE)	0.375	0.185	7/16-20	0.188
DA2006-XXXX	9/16-18 SAE	3/8 (-6 SAE)	0.485	0.225	9/16-18	0.250
DA2008-XXXX	3/4-16 SAE	1/2 (-8 SAE)	0.665	0.225	3/4-16	0.250
DA2010-XXXX	7/8-14 SAE	5/8 (-10 SAE)	0.800	0.250	7/8-14	0.250
DA2012-XXXX	1 1/16-12 SAE	3/4 (-12 SAE)	0.960	0.290	1 1/16-12	0.250

ORDERING GUIDE

DA20 XX - .0000

DRILL-THRU DIAMETER
(SEE CHART ON PAGE 53)

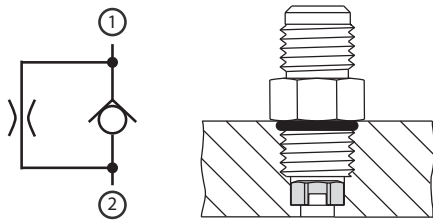
- 04 = 7/16-20 SAE
- 06 = 9/16-18 SAE
- 08 = 3/4-16 SAE
- 10 = 7/8-14 SAE
- 12 = 1 1/16-12 SAE



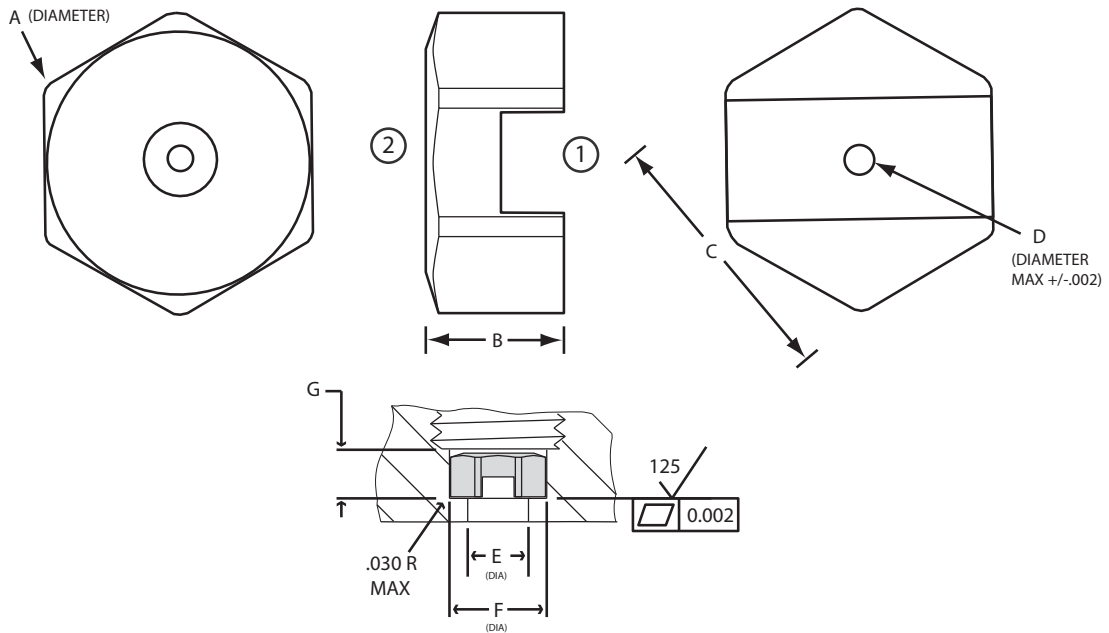
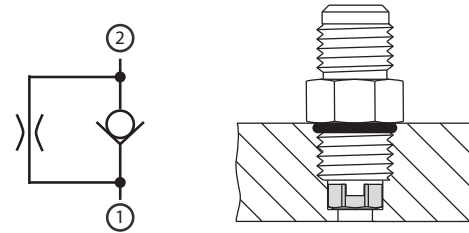
ONE-WAY ORIFICE PLATE

- BRASS ORIFICE PLATES ALLOW A HIGHER RESTRICTION IN ONE DIRECTION AND A LOWER RESTRICTION IN THE OTHER DIRECTION.

STANDARD POSITION



INVERTED POSITION



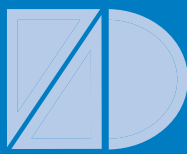
PART #	PORT THREAD SIZE	PORT TUBE SIZE	A	B	C	D	E	F	G
DA3004-XXXX	7/16-20 SAE	1/4 (-4 SAE)	0.355	0.195	0.310	0.125	0.250	0.380/0.390	0.215/0.250
DA3006-XXXX	9/16-18 SAE	3/8 (-6 SAE)	0.483	0.195	0.440	0.150	0.375	0.505/0.515	0.215/0.250
DA3008-XXXX	3/4-16 SAE	1/2 (-8 SAE)	0.650	0.225	0.560	0.250	0.500	0.678/0.688	0.245/0.280

ORDERING GUIDE

DA300 X - .0000

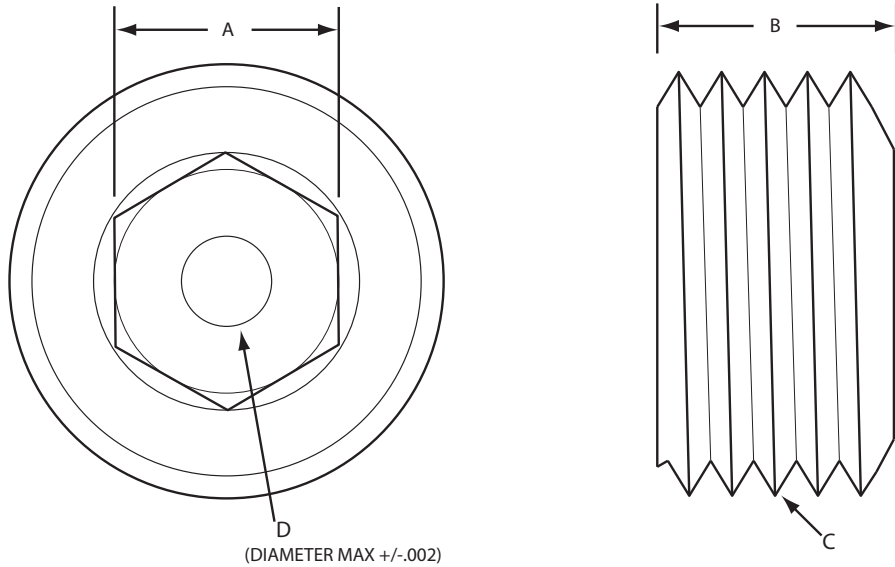
DRILL-THRU DIAMETER
(SEE CHART ON PAGE 53)

- 4 = 7/16-20 SAE
- 6 = 9/16-18 SAE
- 8 = 3/4-16 SAE



ORIFICE PLUGS - STRAIGHT THREAD

- BRASS CUP POINT SET SCREWS
- CONTROLS FLOW IN BOTH DIRECTIONS



PART #	DESCRIPTION	A	B	C	D
DA4000-XXXX	10-24 X 1/4	3/32 HEX	0.250	10-24 THREAD	0.0810
DA4001-XXXX	10-32 X 1/4	3/32 HEX	0.250	10-32 THREAD	0.0810
DA4002-XXXX	1/4-20 X 1/4	1/8 HEX	0.250	1/4-20 THREAD	0.1200
DA4003-XXXX	5/16-18 X 3/8	5/32 HEX	0.375	5/16-18 THREAD	0.1495
DA4004-XXXX	3/8-16 X 3/8	3/16 HEX	0.375	3/8-16 THREAD	0.1850
DA4005-XXXX	1/2-13 X 1/2	1/4 HEX	0.500	1/2-13 THREAD	0.2420

ORDERING GUIDE

DA400 X - .0000

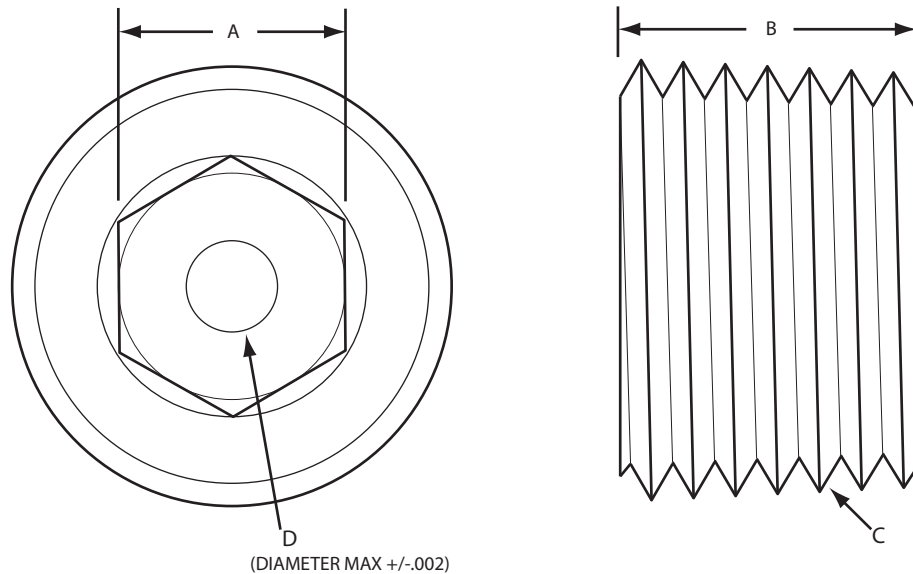
DRILL-THRU DIAMETER
(SEE CHART ON PAGE 53)

- 0 = 10-24 X 1/4
- 1 = 10-32 X 1/4
- 2 = 1/4-20 X 1/4
- 3 = 5/16-18 X 3/8
- 4 = 3/8-16 X 3/8
- 5 = 1/2-13 X 1/2



ORIFICE PLUGS - NPT

- FLUSH TAPER BRASS PLUGS WITH DRYSEAL THREADS
- CONTROLS FLOW IN BOTH DIRECTIONS ∇



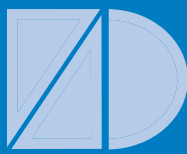
PART #	DESCRIPTION	A	B	C	D
DA5000-XXXX	1/16-27 X 1/4	5/32 HEX	0.250	1/16-27 NPT	0.1495
DA5001-XXXX	1/8-27 X 1/4	3/16 HEX	0.250	1/8-27 NPT	0.1850
DA5002-XXXX	1/4-18 X 13/32	1/4 HEX	0.406	1/4-18 NPT	0.2420
DA5003-XXXX	3/8-18 X 13/32	5/16 HEX	0.406	3/8-18 NPT	0.2500
DA5004-XXXX	1/2-14 X 17/32	3/8 HEX	0.531	1/2-14 NPT	0.2500

ORDERING GUIDE

DA500 X - .0000

DRILL-THRU DIAMETER
(SEE CHART ON PAGE 53)

- 0 = 1/16-27 X 1/4
- 1 = 1/8-27 X 1/4
- 2 = 1/4-18 X 13/32
- 3 = 3/8-16 X 13/32
- 4 = 1/2-14 X 17/32



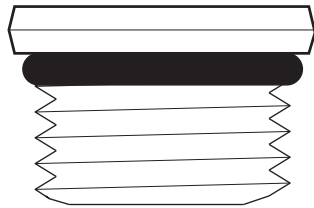
Datum-A-Industries, Inc.

Since 1981

Catalog 2010

SAE PORT PLUGS

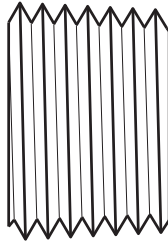
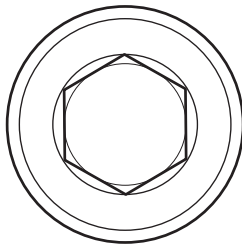
- HEX SOCKET O-RING BOSS PLUG
- CLEAR ZINC (ROHS) STEEL



PART #	DESCRIPTION
DA6002	SAE -2
DA6004	SAE -4
DA6006	SAE -6
DA6008	SAE -8
DA6010	SAE -10
DA6012	SAE -12
DA6016	SAE -16
DA6020	SAE -20

NPT PORT PLUGS

- DRYSEAL SOCKET PRESSURE PLUG
- HEAT TREATED ALLOY STEEL



PART #	DESCRIPTION
DA7000	1/16-27 NPT
DA7001	1/8-27 NPT
DA7002	1/4-18 NPT
DA7003	3/8-18 NPT
DA7004	1/2-14 NPT
DA7005	3/4-14 NPT
DA7006	1-11 1/2 NPT
DA7007	1 1/4-11 1/2 NPT



Datum-A-Industries, Inc.

Since 1981

Catalog 2010

ORDER POLICY

- ALL ITEMS ARE TO BE PREPAID WITH CREDIT CARD OR CHECK UNLESS THERE IS AN OPEN ACCOUNT WITH DATUM-A
- BLANKET ORDERS REQUIRE EACH SHIPMENT TO BE AT LEAST 20% OF TOTAL, FIRM SHIPPING DATES, AND PRICING IS ONLY GUARANTEED FOR SIX MONTHS FROM ORDER DATE
- CERTIFICATES OF COMPLIANCE ARE AVAILABLE UPON REQUEST \$10 SURCHARGE PER SHIPMENT FOR CERTIFICATES

RETURN POLICY

- ALL RETURNS WILL REQUIRE AN RGA NUMBER TO BE ACCEPTED
- NO RETURNS AFTER SIX MONTHS FROM RECEIPT OF PRODUCT
- 25% RESTOCKING FEE WILL BE TAKEN FROM CREDIT
- PRODUCT MUST BE IN ORIGINAL PACKAGING AND IN CONDITION RECEIVED
- RETURNS DUE TO DEFECTIVE OR DAMAGED PRODUCT WILL NOT BE CHARGED RESTOCKING FEE BUT RMA# NEEDS TO BE ACQUIRED WITHIN TWO MONTHS OF RECEIPT OF PRODUCT
- NO REFUND ON CUSTOM BLOCKS UNLESS DEFECTIVE

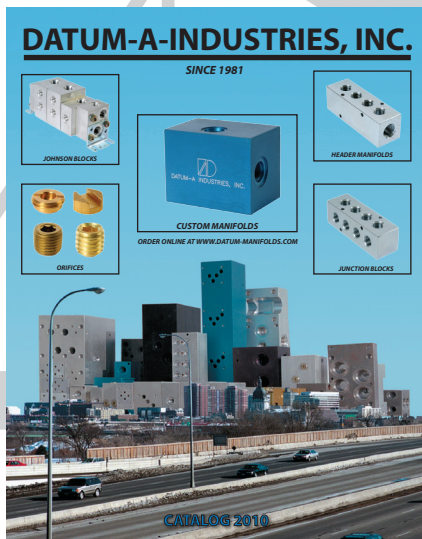
DISCLAIMER

- WE ARE NOT RESPONSIBLE FOR CLERICAL, TYPOGRAPHICAL, COMPUTER OR PRINTER ERRORS
- ALL PRICES, DISCOUNTS, AND PRODUCT SPECIFICATIONS ARE SUBJECT TO CHANGE WITHOUT NOTICE
- THE BUYER IS RESPONSIBLE TO DETERMINE THE SUITABILITY OF OUR PRODUCT FOR THEIR APPLICATION AND TAKES ALL RISK WHEN USING THE PRODUCT
- THE BUYER SHALL BE AWARE OF ALL ENVIRONMENTAL FACTORS, MATERIAL COMPATIBILITY, HIGH PRESSURE LEVELS AND CODE COMPLIANCE THAT WILL AFFECT THE PRODUCT AND THEIR APPLICATION

YOUR DATUM-A-INDUSTRIES DISTRIBUTOR



ORDER ONLINE AT WWW.DATUM-MANIFOLDS.COM



NEED MORE CATALOGS AND PRICELISTS?
FIND AT WWW.DATUM-MANIFOLDS.COM
EMAIL INFO@DATUM-MANIFOLDS.COM
OR REQUEST FROM YOUR LOCAL DISTRIBUTOR

DATUM-A-INDUSTRIES, INC. PO BOX 218, 1410 COUNTY RD 90 , MAPLE PLAIN, MN 55359
Ph:(800) 806-6162, (763) 479-1133 Fx: (763) 479-3667 Email: info@datum-manifolds.com
Website: www.datum-manifolds.com